

Sunshine National Employment Cluster

Collaboration to explore integrated water servicing solutions

Aleks Svazas
City West Water
4 May 2017

City West Water

- ^ Retail water business in Melbourne
- ^ Provide water (drinking, recycled and storm), sewerage, trade waste, services
- ^ Services Melbourne's CBD, inner and western suburbs



Sunshine NEC

- ^ Identified as an area of major redevelopment in the next 30 years
- ^ Includes Sunshine and St Albans town centres
- ^ Sunshine health and well being precinct
- ^ Growth in population 46,000
- ^ Growth in jobs 28,000

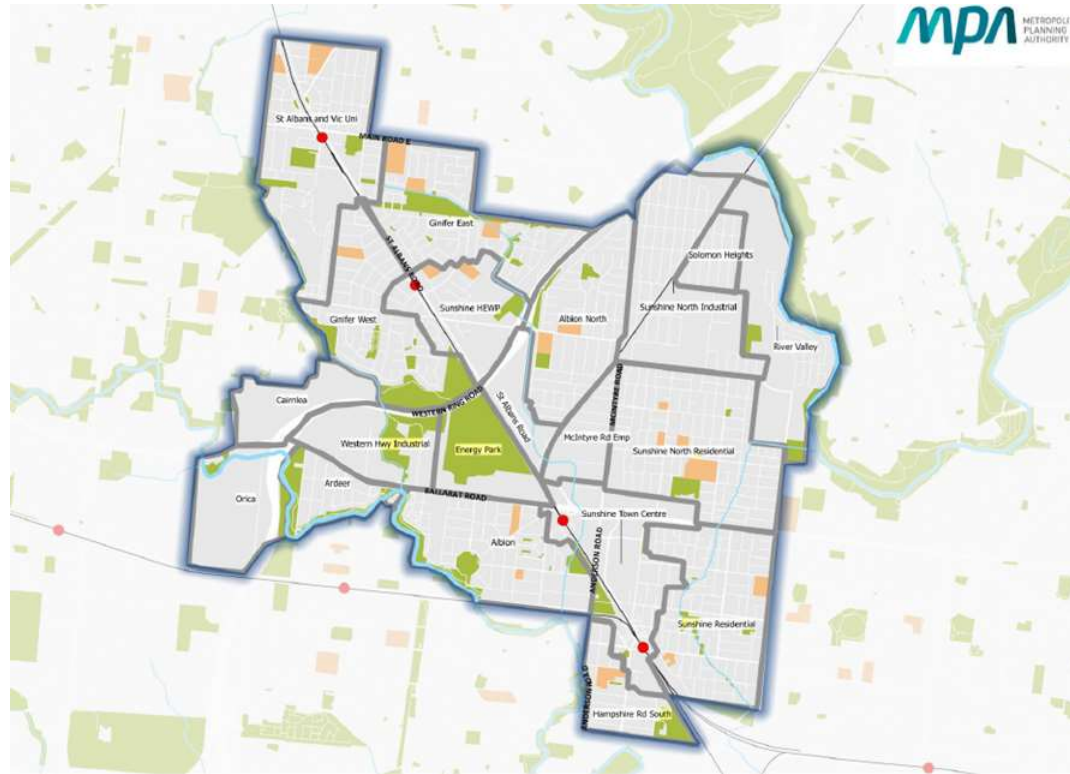


Sunshine NEC

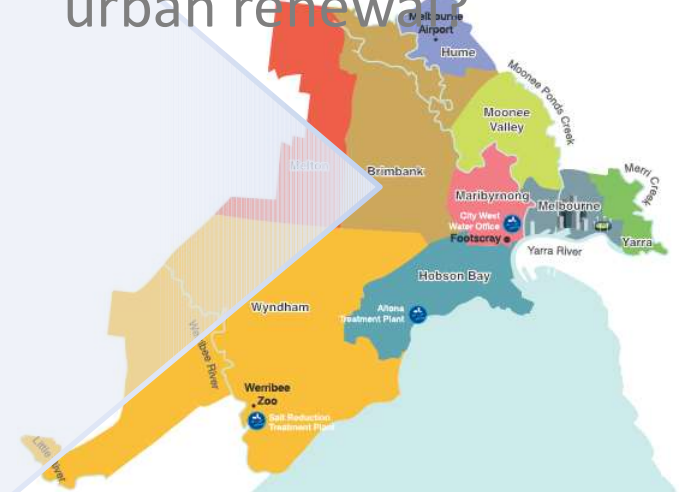
- ^ Integrated Water Cycle Management
- ^ Collaborative approach, community benefits



Sunshine NEC



What makes the NEC a good precinct for urban renewal?



Sunshine NEC

- ^ How do we provide sustainable water services?
- ^ Retail water and sewage services
- ^ Floodplain, waterway health and bulk water services
- ^ Drainage and urban amenity



Investigation so far

- ^ Waterway health
- ^ Water supply
- ^ Sewage

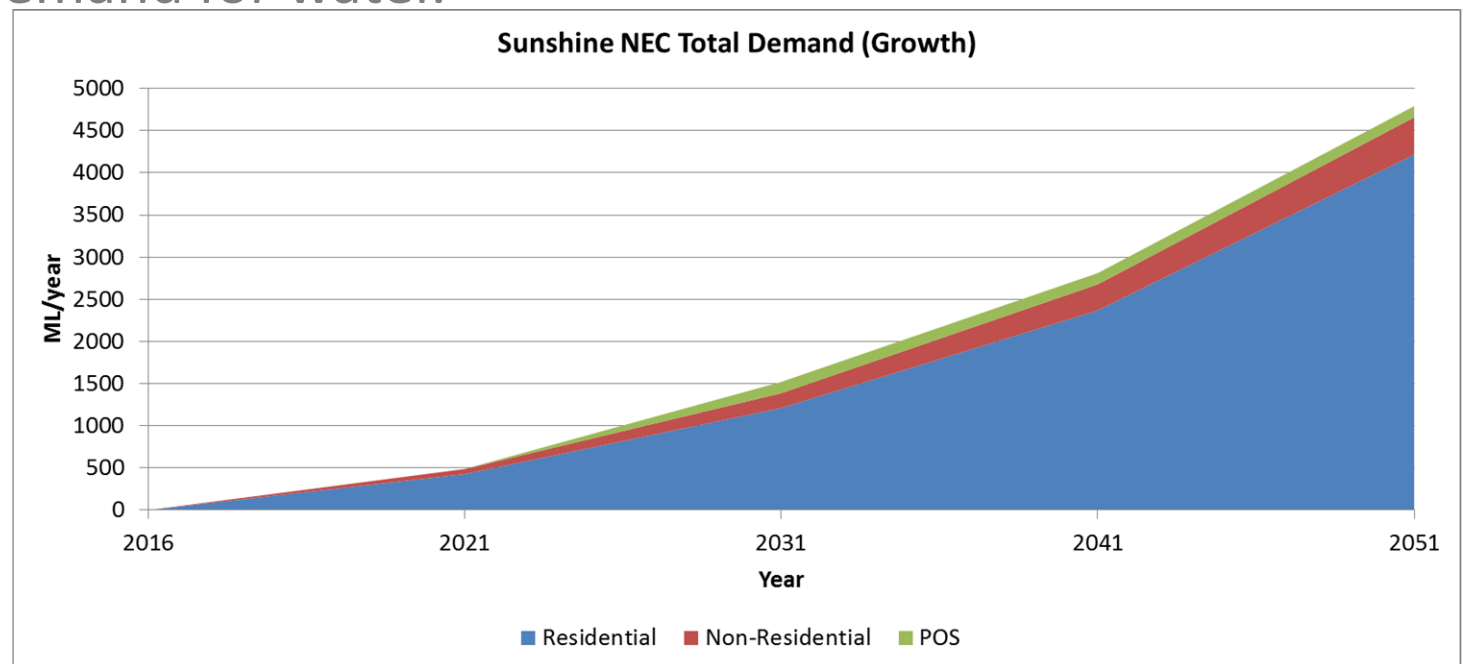


CityWest Water™



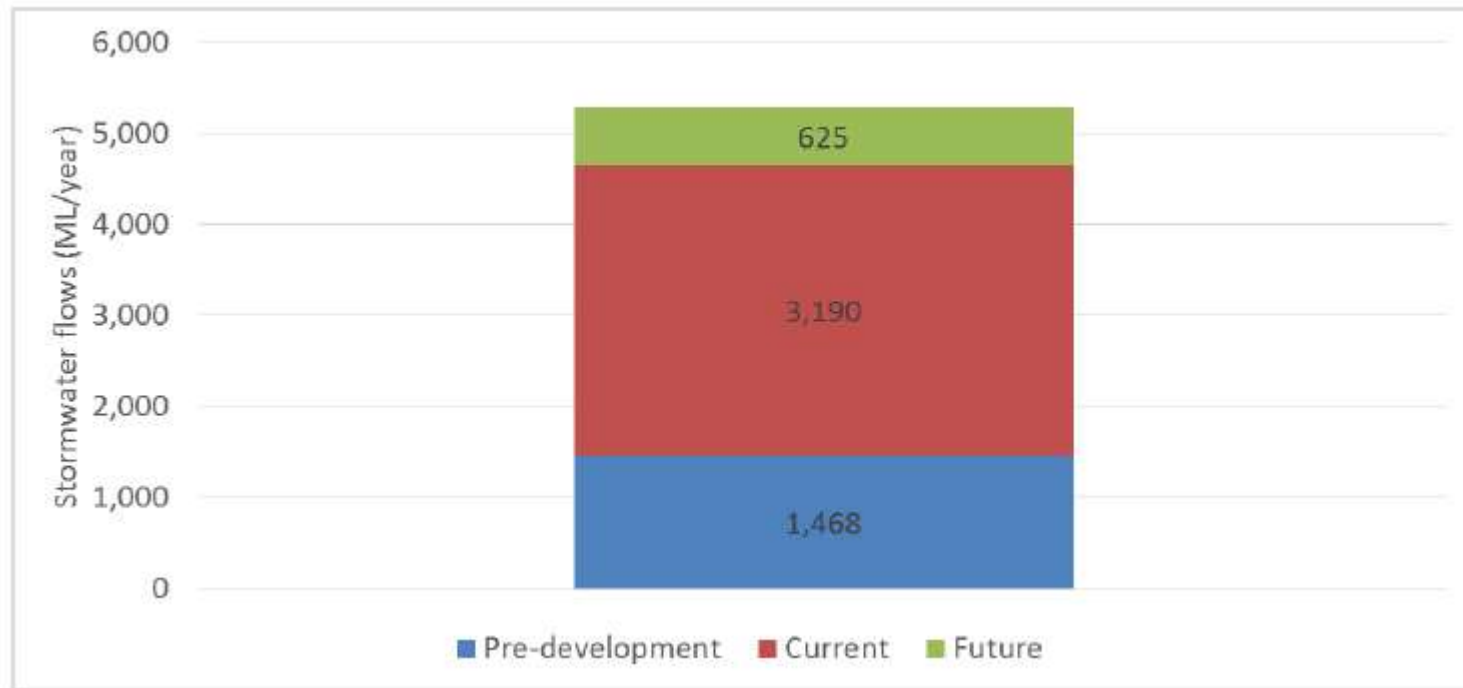
Water and Sewerage Services

^ Growth in demand for water.



City West Water™

Flood Management and Waterways

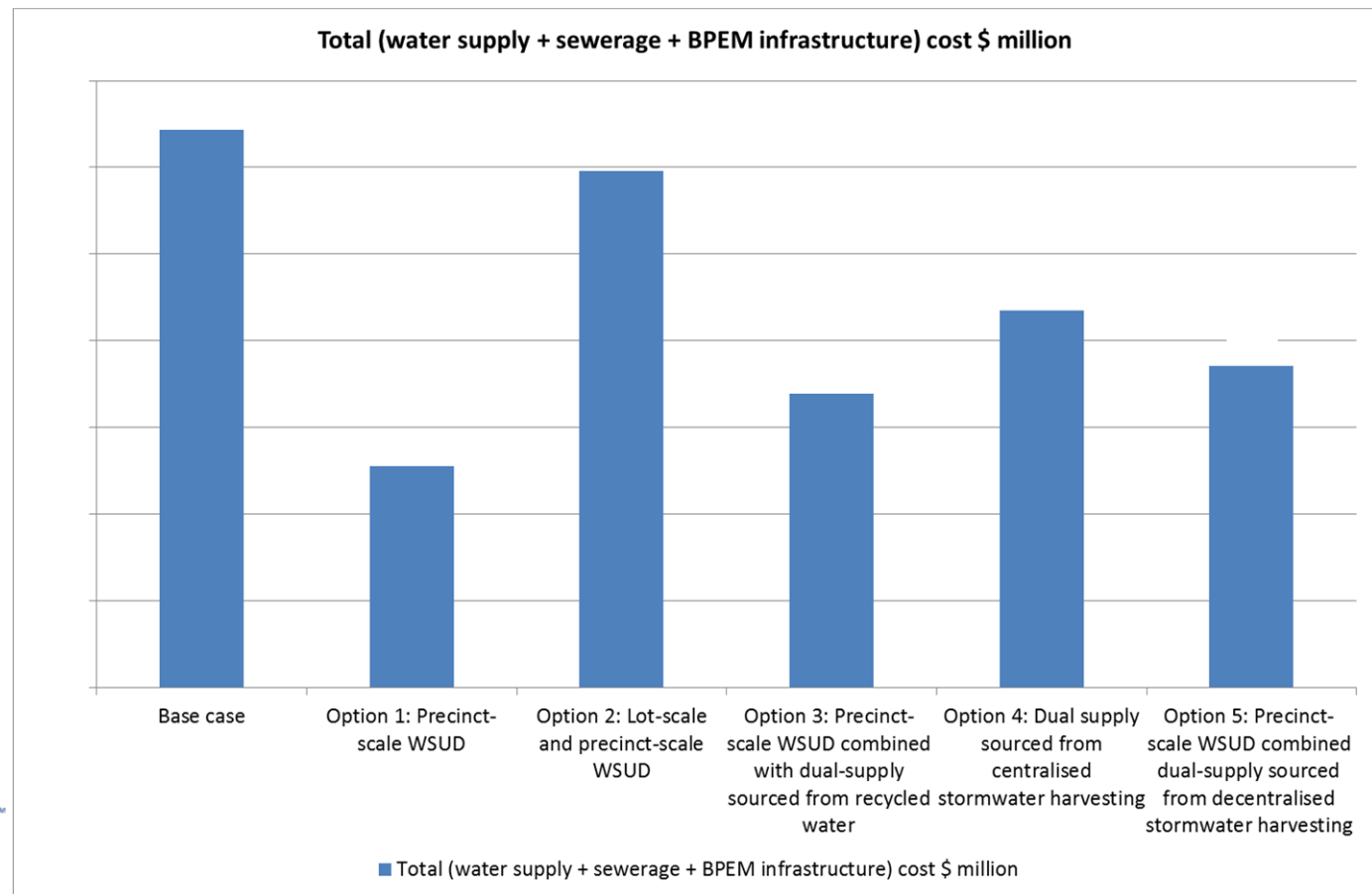


The Options

Base case – existing servicing strategies, including clause 56.07

1. Precinct scale WSUD measures to meet 56.07 only
2. Lot scale and precinct scale WSUD
3. Option 1 plus dual water supply (Ravenhall)
4. Dual supply sourced from centralised stormwater harvesting
5. Precinct scale WSUD used for dual supply decentralised stormwater harvesting

Results - Costs



Where to from here?

- ^ Have we done enough research to justify a preferred solution?

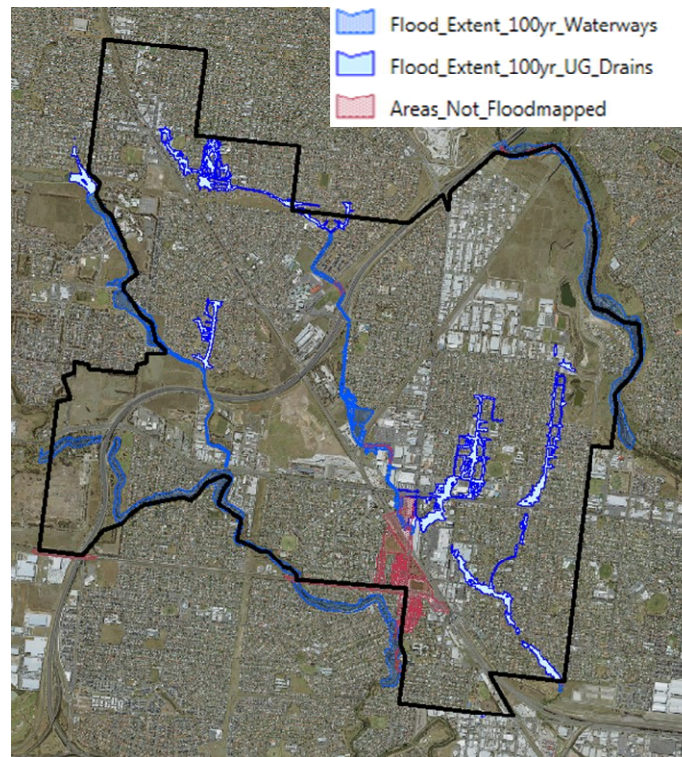


CityWest Water™



Where to from here?

Flooding



Where to from here?

Urban Amenity

- ^ Improvements in biodiversity and amenity
- ^ Reduction in infrastructure damage, flooding, atmospheric gases
- ^ Mitigation of air and noise pollution, heat island effect
- ^ Improving physical and mental health



Where to from here?

Deferred assets



Where to from here?

Guidelines and Planning

- ^ Review of BEPM, SEPP, stormwater management generally – how do these affect results?
- ^ Planning mechanisms for precinct WSUD in a renewal context

Thanks to

- ^ City West Water: Ding Chan, Nigel Corby
- ^ Brimbank City Council: Ray Martin
- ^ Melbourne Water: Luke Wait

