

# Greening The Pipeline

Transforming the Main Outfall Sewer  
to improve Liveability in Melbourne's West

# Overview

---

Vision

Urban growth pressure

Enhancing life and liveability

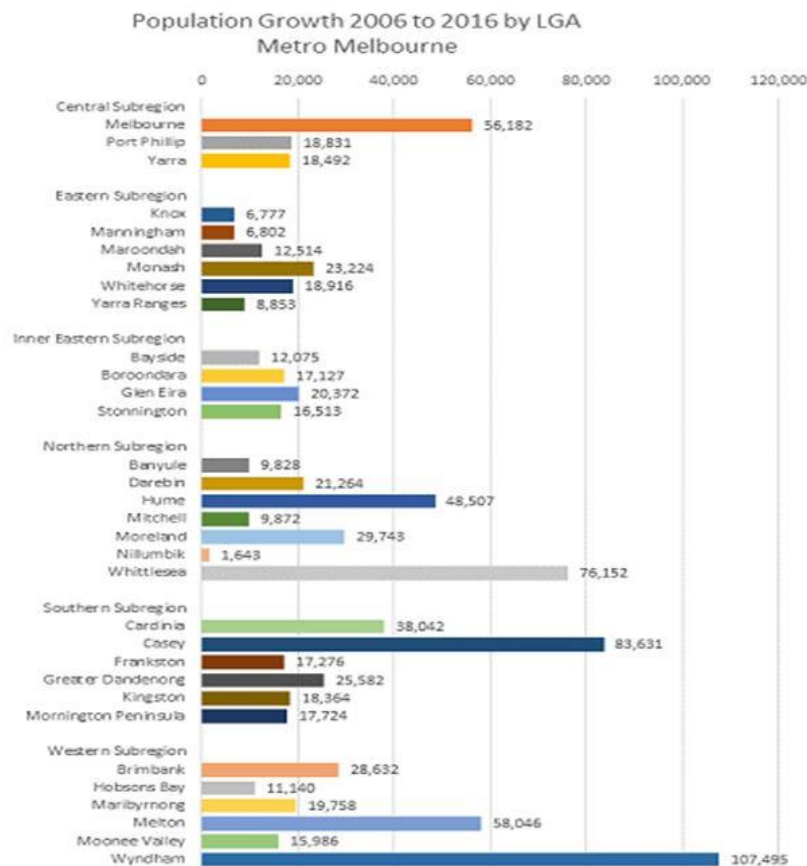
Partnership

Stakeholder & community engagement

Williams Landing pilot project

Next steps

# Setting the scene: Urban growth

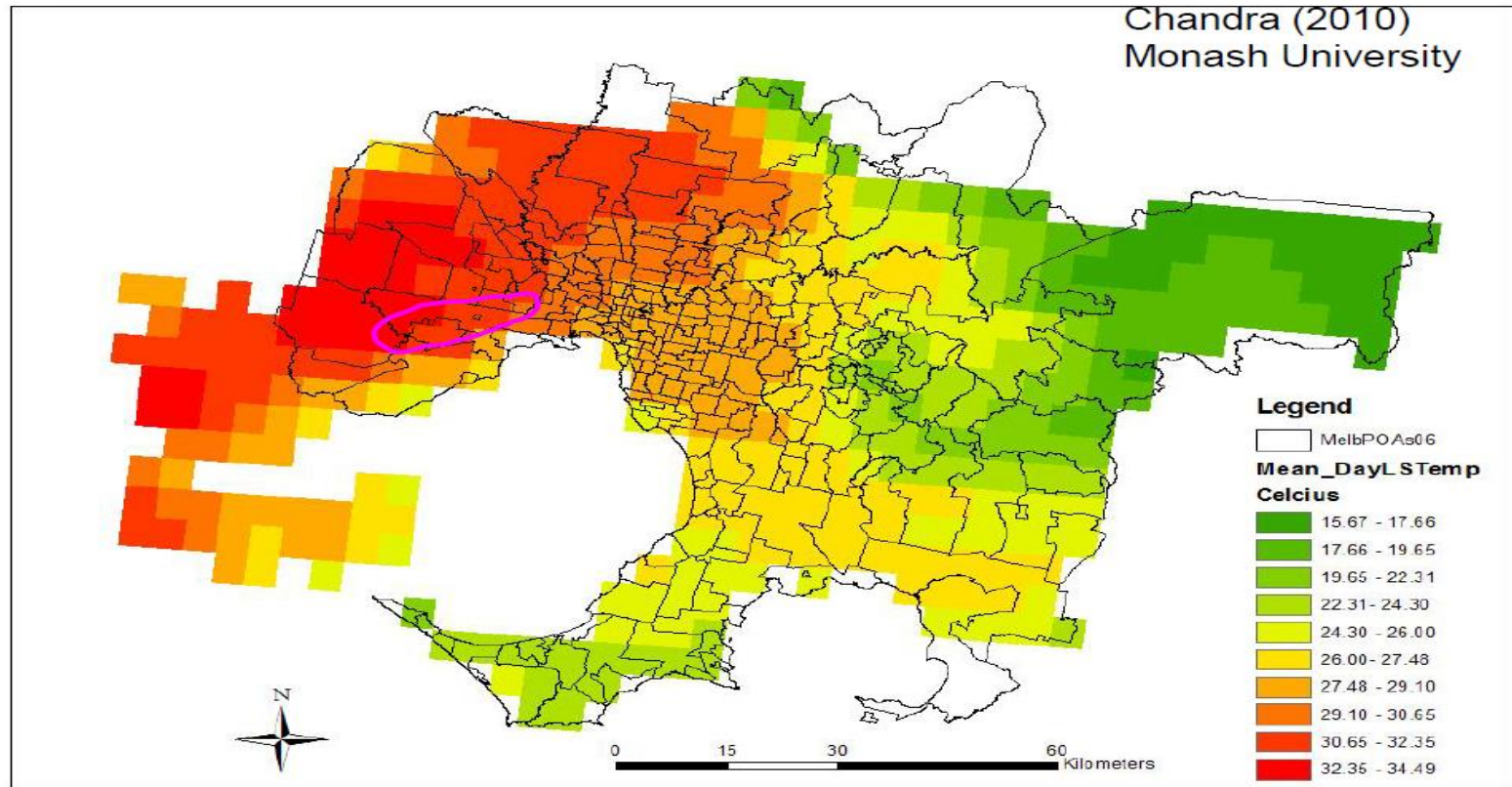


# Setting the scene: Urban growth



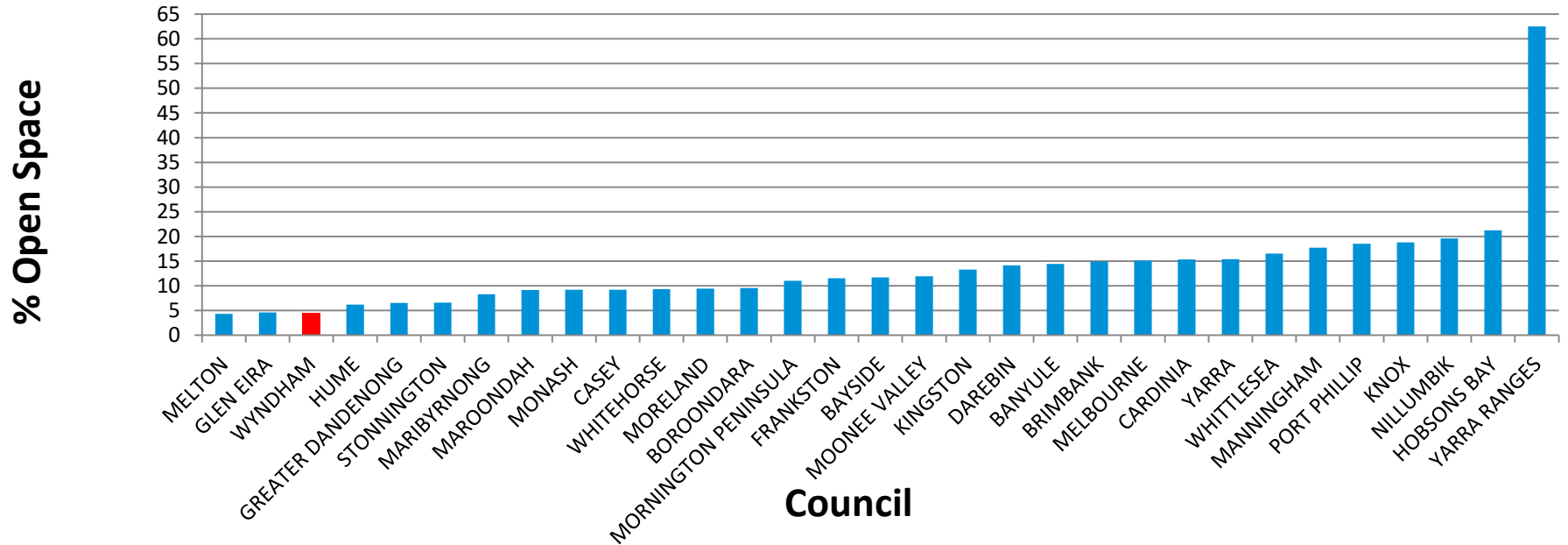


# Daily temperature



# Open space

## Percentage of Open Space within different municipalities in 2011



## Enhancing Life and Liveability



### Healthy People

Strengthening the wellbeing  
of the community.



### Healthy Places

Co-creating the world's most  
desirable places to live.



### Healthy Environment

Enhancing the  
natural environment.

# Partners

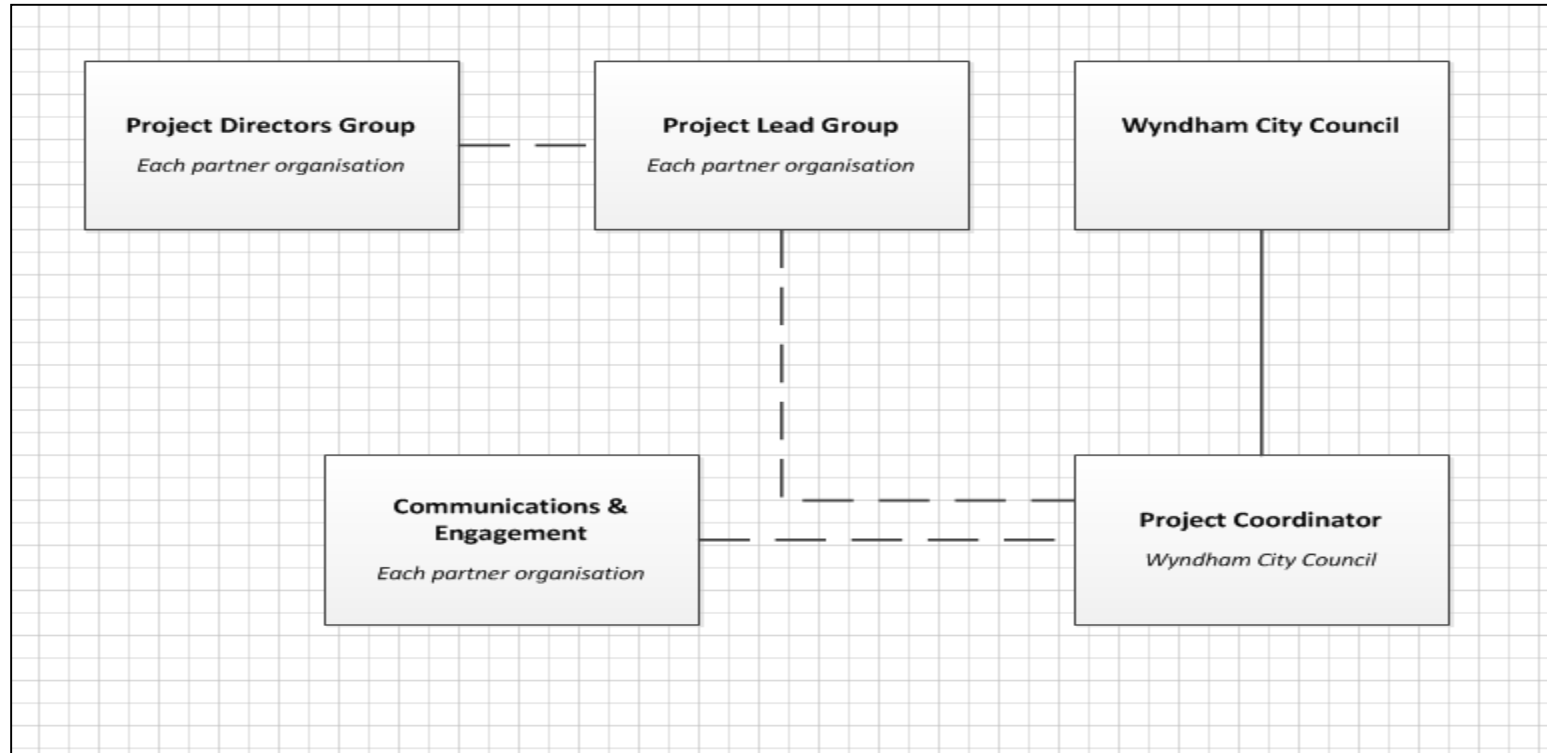




# Working together



# Partnerships (& Governance)



# Stakeholders

Heritage Council of Victoria

## **Heritage Victoria**

Bicycle Network Victoria

BayWest BUG

Werribee Historical Society

Lead West

## **Friends of Skeleton Creek**

Truganina Landcare Group

Westbourne Grammar School

Al-Taqwa College

Truganina South Primary School

Truganina SC Hornets (Arndell Park Reserve)

Werribee Environmental Community Park

Nature West

Williams Landing Residents Association

Truganina Community Group Inc

Committee for Wyndham

Wyndham Tourism Association

Wyndham BizNet

## **Port Phillip and Westernport Catchment Management Authority**

Southern Rural Water

## **Victorian Planning Authority**

Tourism Victoria

CedarWoods Developers

Western Health

Department of Health and Human Services

Western Melbourne Regional Development Australia (WMRDA)

## **Brimbank City Council**

## **Hobsons Bay City Council**

## **UDIA**

The Migrant HUB

Resilient Melbourne

Williams Landing Community & Residents

People and Parks Foundation

## **Friends of Lower Kororoit Creek.**

Point Cook Open Spaces

Brooklyn Residents Action Group Inc

Point Cook Action Group

# Stakeholders

Heritage Council of Victoria

## **Heritage Victoria**

Bicycle Network Victoria

BayWest BUG

Werribee Historical Society

Lead West

## **Friends of Skeleton Creek**

Truganina Landcare Group

Westbourne Grammar School

Al-Taqwa College

Truganina South Primary School

Truganina SC Hornets (Arndell Park Reserve)

Werribee Environmental Community Park

Nature West

Williams Landing Residents Association

Truganina Community Group Inc

Committee for Wyndham

Wyndham Tourism Association

Wyndham BizNet

## **Port Phillip and Westernport Catchment Management Authority**

Southern Rural Water

## **Victorian Planning Authority**

Tourism Victoria

CedarWoods Developers

Western Health

Department of Health and Human Services

Western Melbourne Regional Development Australia (WMRDA)

**Essendon City Council**

**Hobsons Bay City Council**

## **UDIA**

The Migrant HUB

Resilient Melbourne

Williams Landing Community & Residents

People and Parks Foundation

## **Friends of Lower Kororoit Creek.**

Point Cook Open Spaces

Brooklyn Residents Action Group Inc

Point Cook Action Group

COMMUNITY

# Community & Stakeholder engagement

During May and June 2016, a number of community engagement activities were run.

## Purpose

- Raise awareness about the project
- Develop an understanding of the community's ideas and preferences for the future of the pipeline
- Gather data to inform the design

# Community & Stakeholder engagement

- **Online website**
- **Face-to-face**
  - Community events
  - Workshops
  - Visitation survey
- **Social media**



# Community & Stakeholder engagement

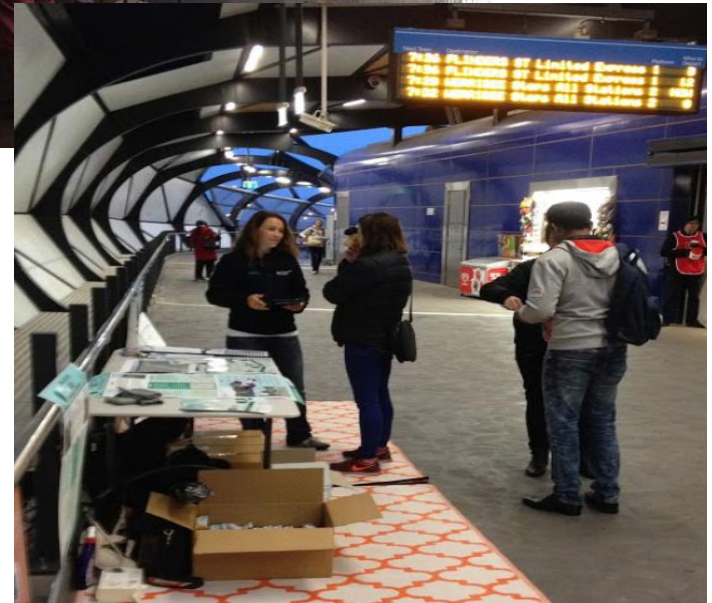
<http://greeningthepipeline.com.au/>

- **Online website**
- **Face-to-face**
  - Community events
  - Workshops
  - Visitation survey
- **Social media**



# Community & Stakeholder engagement

- **Online website**
- **Face-to-face**
  - Community events x2
  - Workshops
  - Visitation survey
- **Social media**



# Community & Stakeholder engagement

- **Online website**
- **Face-to-face**
  - Community events x2
  - **Workshops**
  - Visitation survey
- **Social media**



# Community & Stakeholder engagement

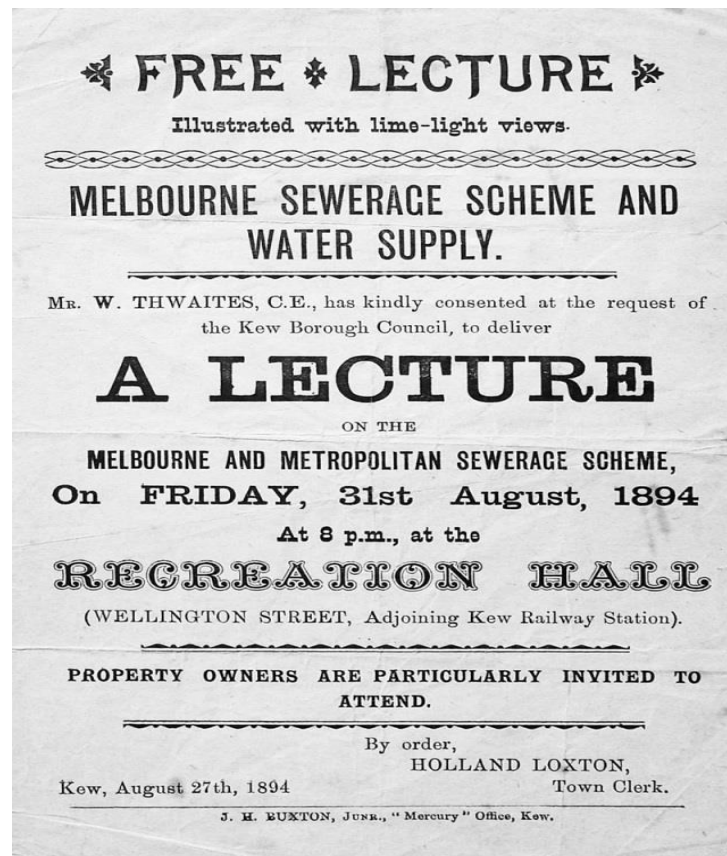
- **Online website**
- **Face-to-face**
  - Community events x2
  - Workshops
  - Visitation survey
- **Social media**





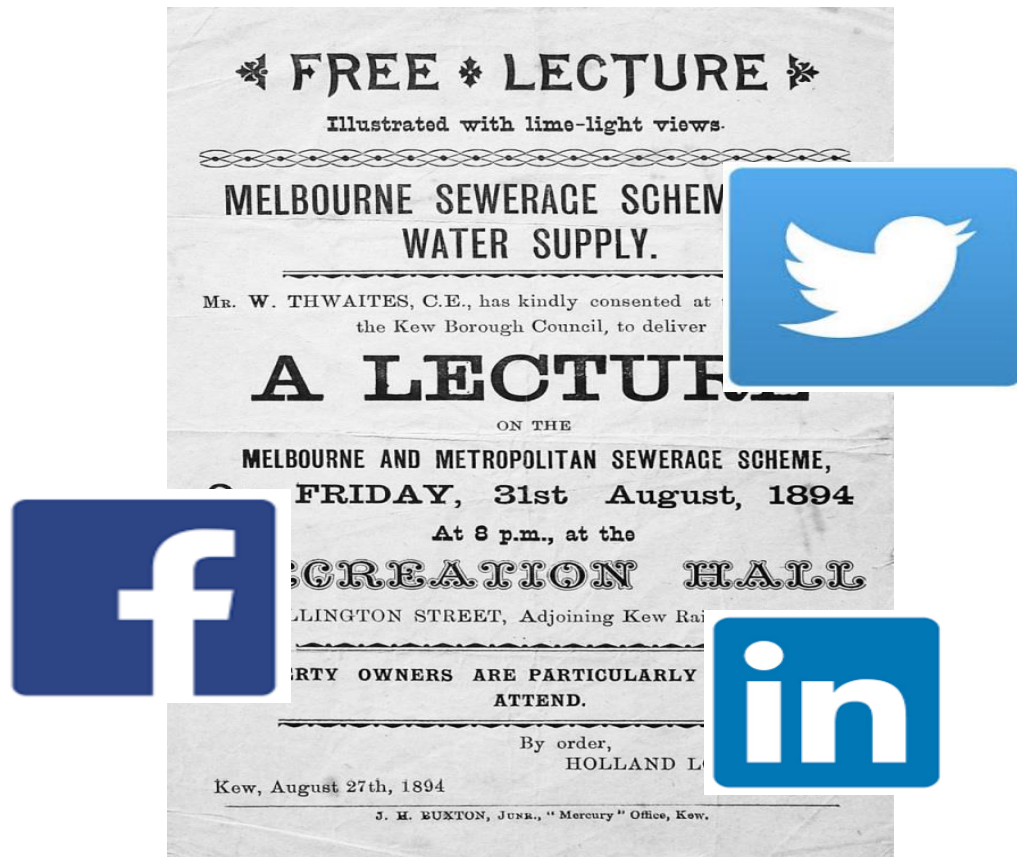
# Community & Stakeholder engagement

- **Online website**
- **Face-to-face**
  - Community events x2
  - Workshops
- **Social media**



# Community & Stakeholder engagement

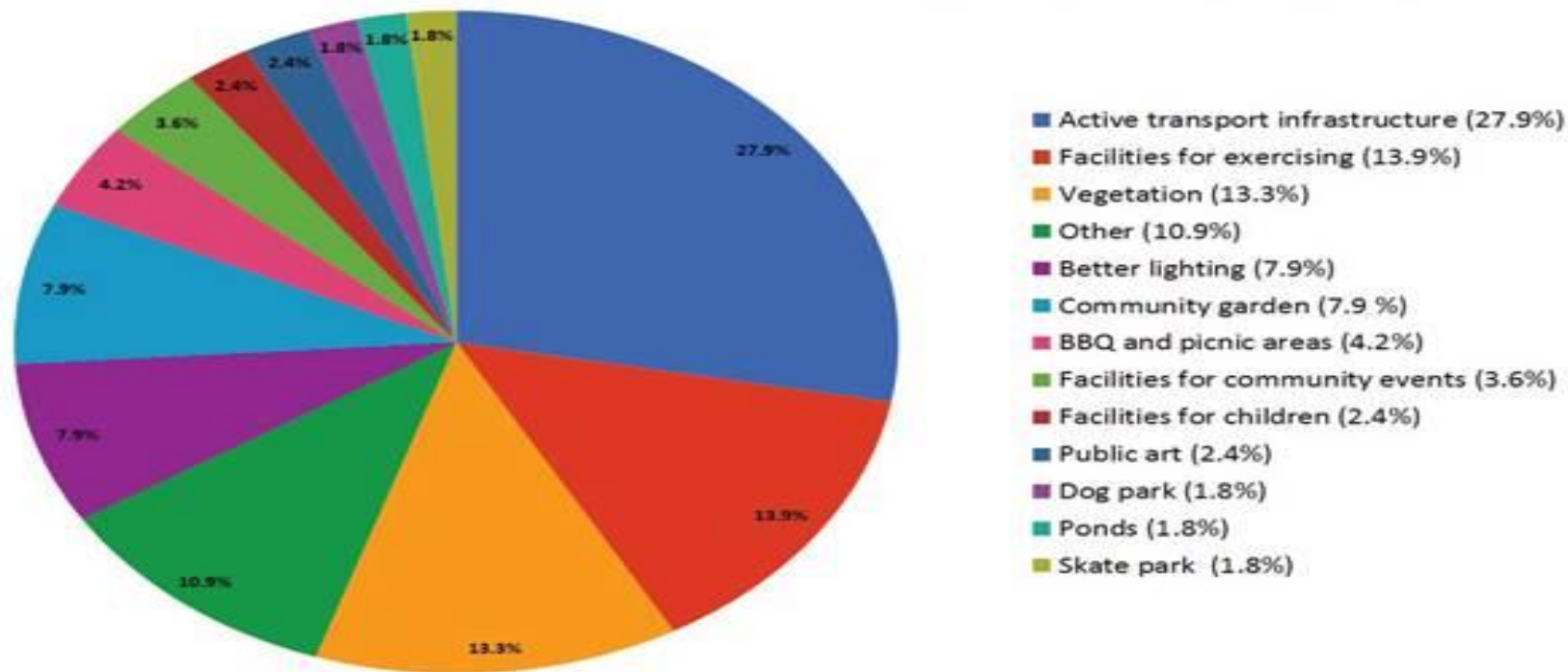
- **Online website**
- **Face-to-face**
  - Community events x2
  - Workshops
- **Social media**





# Community feedback

Local residents' and businesses' ideas for the future of the pipeline (121 ideas, 46 supports)



# MOS Pilot, Williams Landing



EXISTING CONDITIONS



ARTISTS IMPRESSION

Greening the Pipeline - Williams Landing Pilot Project

DRAFT

# MOS Pilot, Williams Landing

## Partners





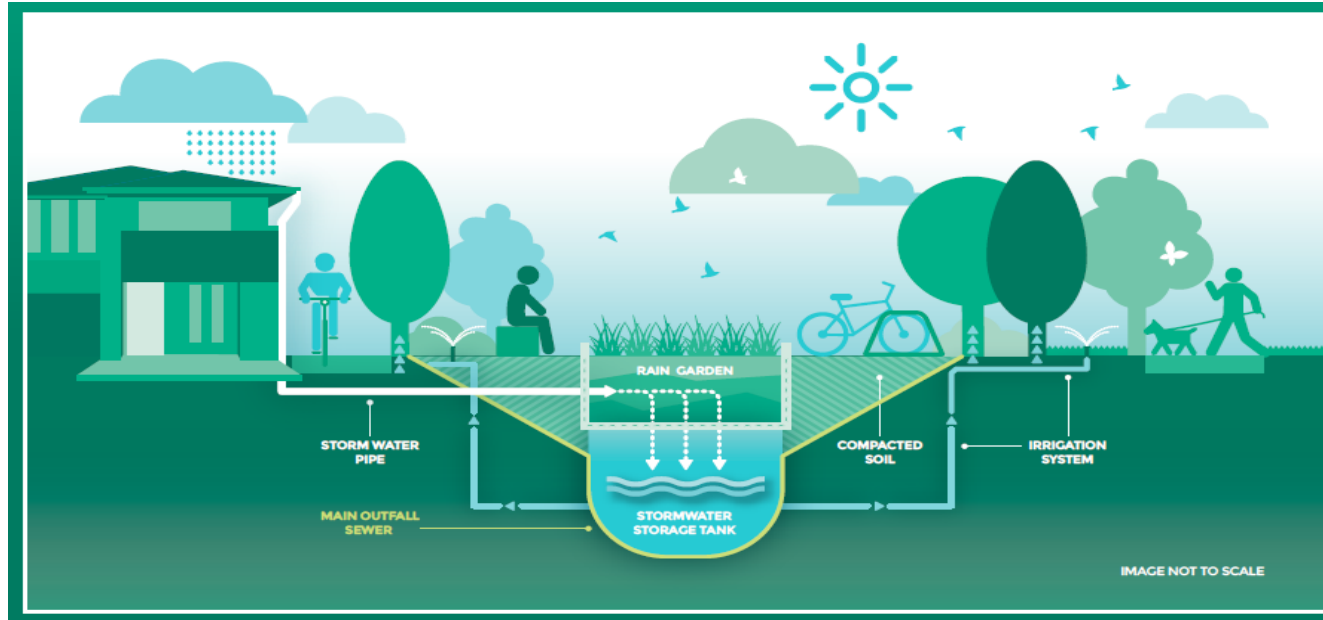


# MOS Pilot, Williams Landing

## Catchments



## Stormwater Harvesting, Treatment & Reuse





# MOS Pilot, Williams Landing

## Early Construction Phase



# MOS Pilot, Williams Landing

## Mid Construction Phase





# MOS Pilot, Williams Landing

## Late Construction Phase



# MOS Pilot, Williams Landing





# Timeline for the Greening the Pipeline initiative

- 2016: Project Coordinator employed at Wyndham Council
- 2017: Williams Landing parkland completed
- 2017-2018: Design Guidelines & Strategy
- 2017: Master planning of Zone 5
- 2017-2018: Planting 45,000 trees
- 2017-2018: Research
- 2017-2019: Stormwater harvesting system study (Arndell Park)
- Ongoing: Apply for grants/funding sources
- Ongoing: East Werribee Employment Precinct (VPA)
- Ongoing: Development opportunities
- Ongoing: VicRoads West Gate Tunnel Project and OSAR
- Ongoing: GTP Friends Group
- Ongoing: Design

# You can find Greening the Pipeline on.....

- Website: [www.greeningthepipeline.com.au](http://www.greeningthepipeline.com.au)
  - Sign up as a 'Friend of the Pipeline'
- Youtube
- Google Maps

