

# Why benchmark?

## **Pictures removed – notes text**

What we know about water in Moonee Valley

- 4 waterways, mostly poor quality but one of which has a resident seal and sometimes dolphins and penguins
- 220 parks and gardens but not evenly distributed
- We know 7,700ML stormwater generated from roof run off but only 4% harvested
- Major stormwater harvesting project at Afton Street Wetland
- We have a planning amendment which requires means potentially 1000 private developments have met best practice requirements annually
- Some raingardens and other WSUD features
- Local flooding is a problem

But.. Are we anywhere near a water sensitive city. In the past I would just point to the continuum and say “we sit around here”

The WSC benchmark provided us with an opportunity to quantify where MV really sits. And how this compares with other metro areas. With thanks to Melbourne Water, we were able to go through this process

It was also a way that we could start connecting with the enormous amount of research that is coming out of the CRC for Water Sensitive Cities.

But what was most exciting about the process, is that it would allow us to start prioritizing which actions would move us closer to our ultimate goal.

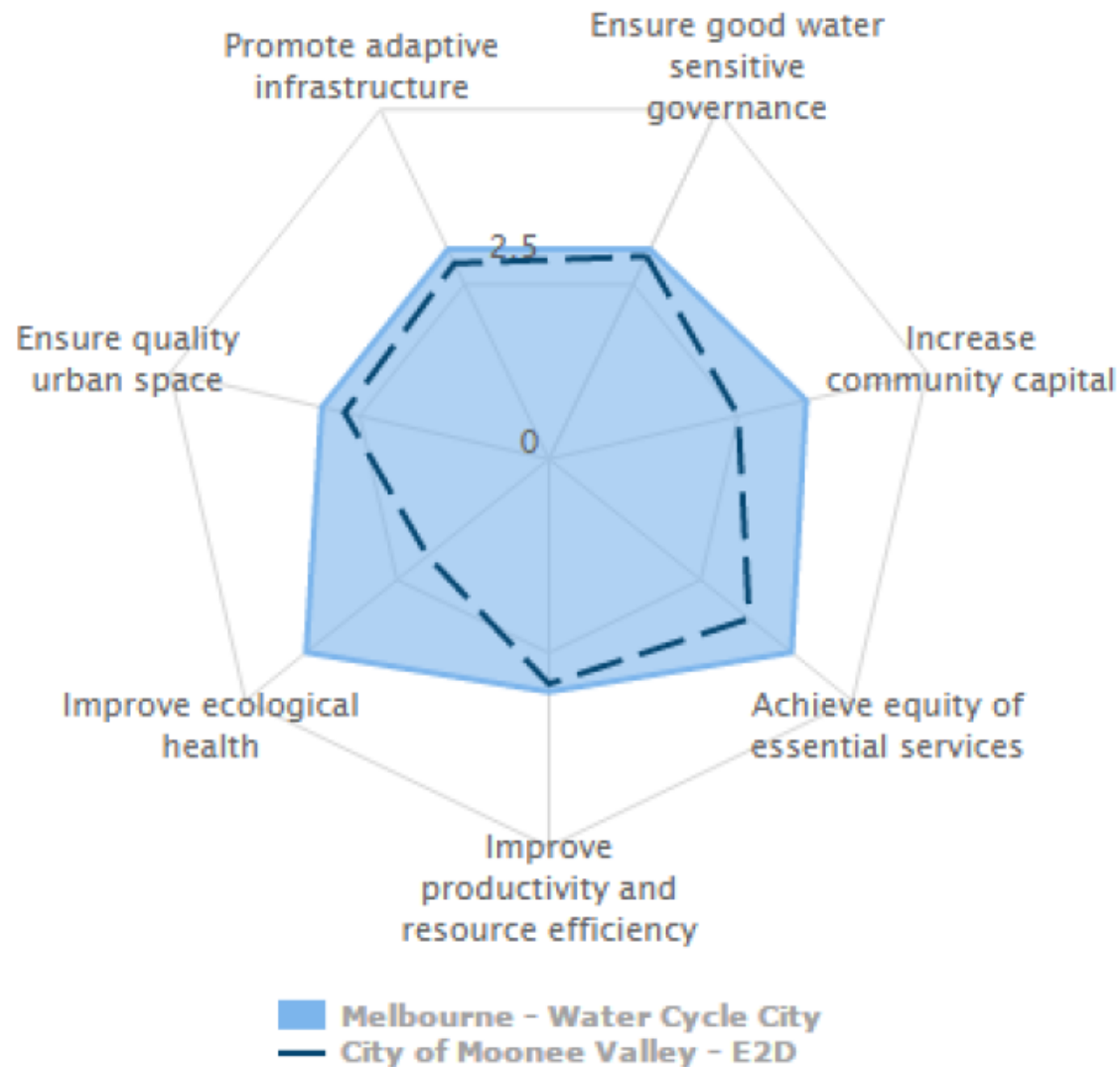
# The benchmarking experience

---

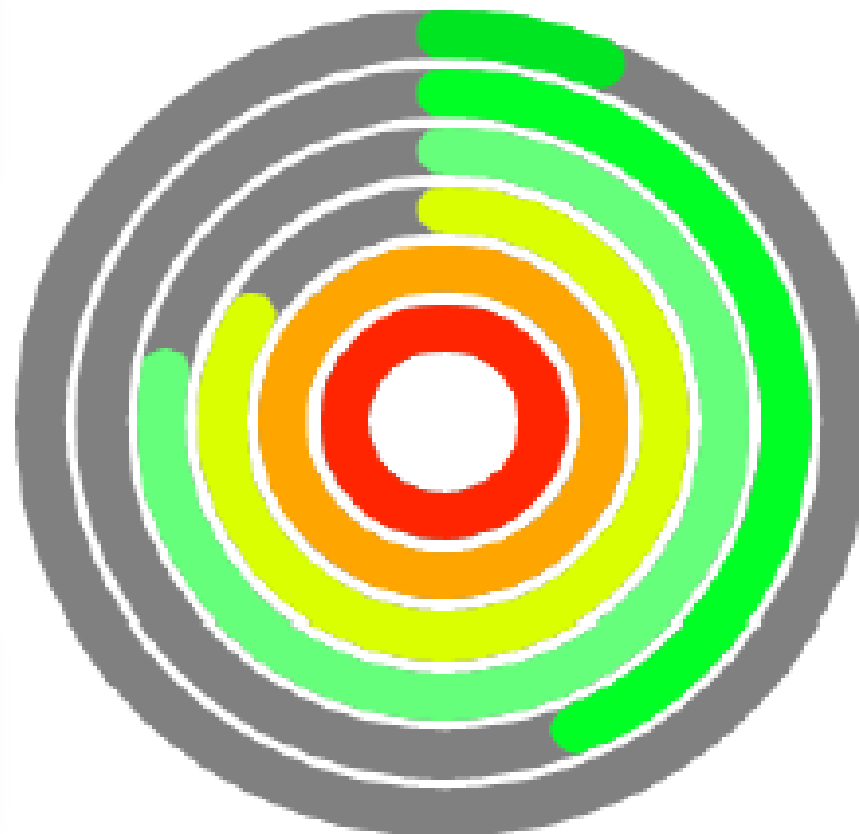
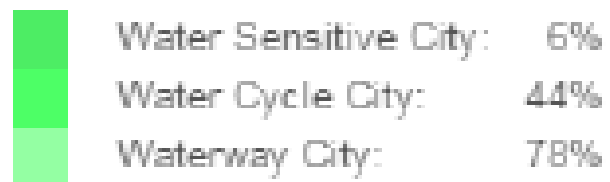


- Multiple stakeholders – Council, Melbourne Water, City West Water
- Live polling is engaging and inclusive
- New people and new insights

# The results



# The results



# The report





# What happens next?



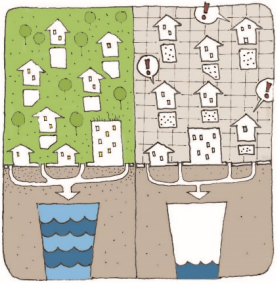
Incorporate Water Sensitive City goals and key actions into MV 2040

Principles

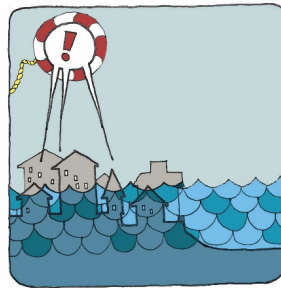
- Equity
- Liveability
- Sustainability

# A vision for 2040

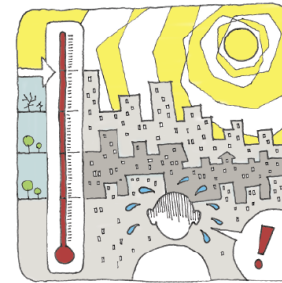
## A water sensitive, green, cool, climate adapted city



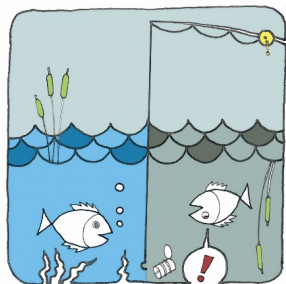
green



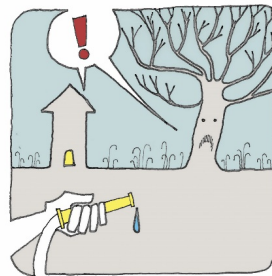
flood  
control



cooling



flow  
control



water  
supply



practical  
spaces

# Setting targets for 2040

---

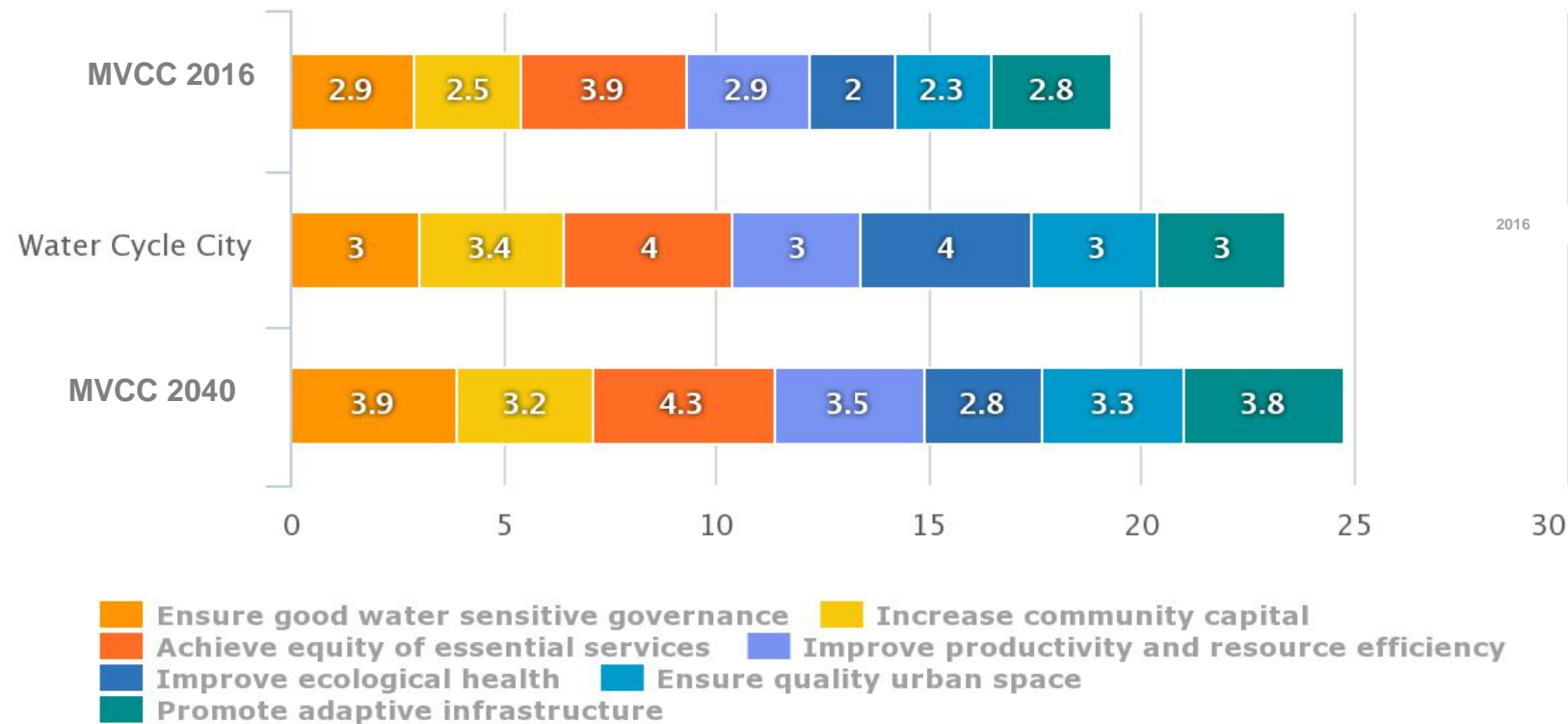
## *Themes:*

- *Keeping water in the environment*
- *Protecting assets from storm events*
- *Ensuring equitable access to green space*
- *Increasing tree and vegetation coverage*
- *Creating resilient and connected landscapes*
- *Improving community capital around water, soils and vegetation*

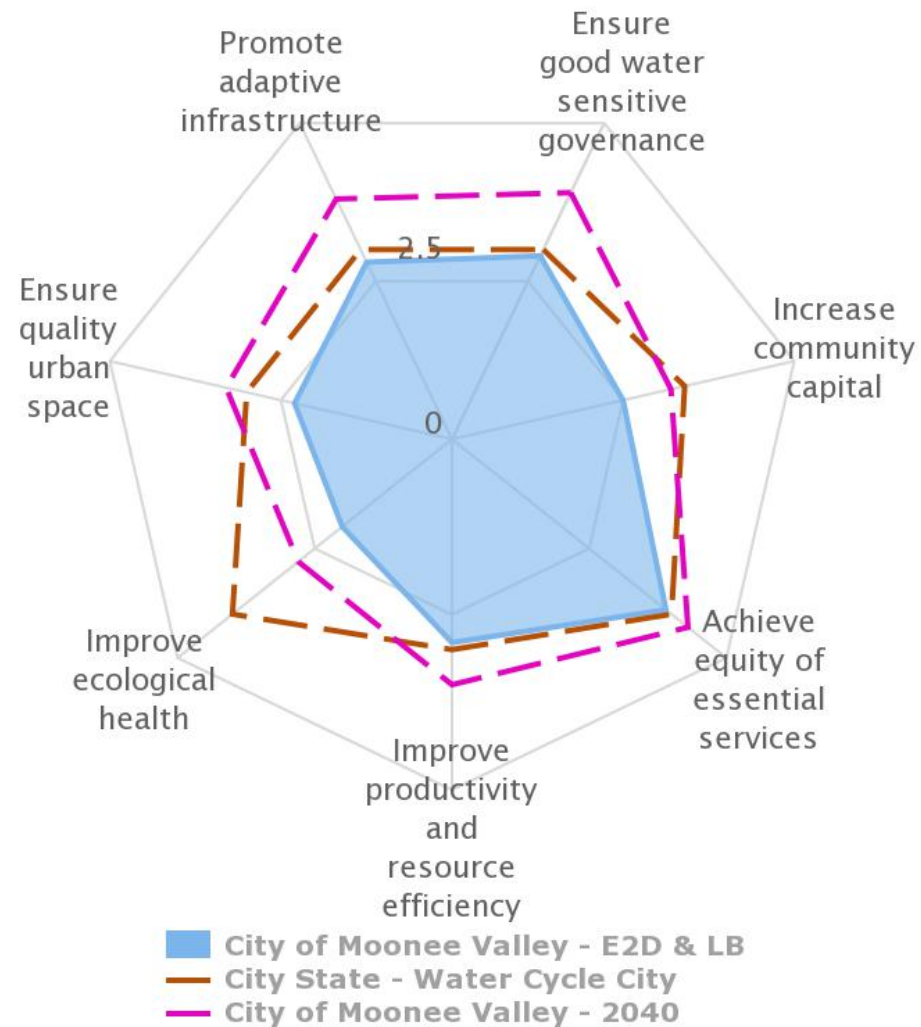


# Expected results in 2040

## MVCC 2040 benchmarking taking into account new long term targets



# Expected results in 2040



# Expected results in 2040

---

- cool, green spaces for all
- healthier communities
- efficient water use
- an engaged community
- climate adapted and resilient neighbourhoods in times of drought and flood
- healthy waterways and thriving urban ecology

