

Melbourne Water's Urban Cooling Program

A tangible climate
change adaptation
initiative

Stormwater Victoria

IWM for Cooler, Greener Cities –
Is It Really So Easy?

6 March 2018

Carol Jadraque

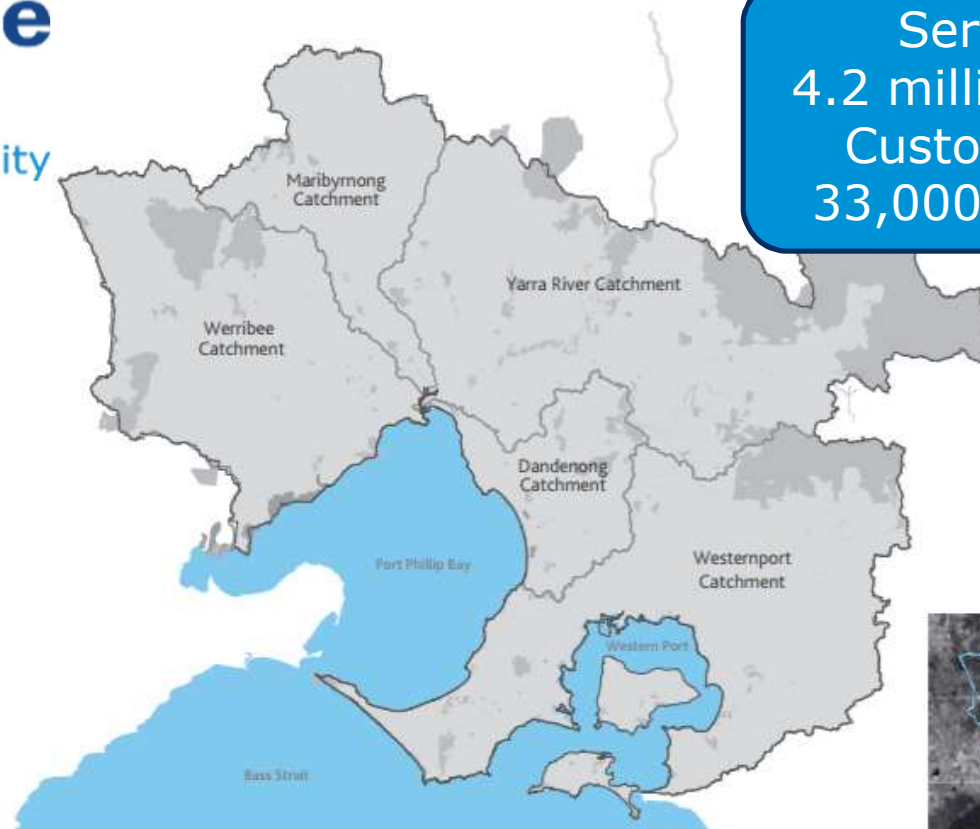
Acting Principal, Resilience
Manager, Clearwater

Who are we?

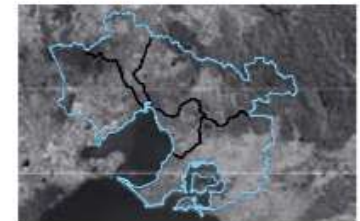


Enhancing Life and Liveability

- Supply of high-quality drinking water
- Reliable sewerage services
- Integrated drainage systems
- Flood prevention
- Enhancing waterways and land for greater community use



Servicing
4.2 million people
Custodians of
33,000 hectares



Projects with Urban Cooling

8 new
wetlands
in 2017



Featherbrook Estate Point Cook Wetlands

Projects with Urban Cooling



St Georges Road Shared Pathway

Projects with Urban Cooling



\$8.4
million
of
funding
in 2017

Mutton Reserve, Moreland City Council

Policy Enablers



Where to go?



Victoria Walks

17 hrs · 🌐

It says: "Urban shade and greenery goes here" 📍

Yes please!



"Urban Shade
Greenery goes
here"

Internal Drivers

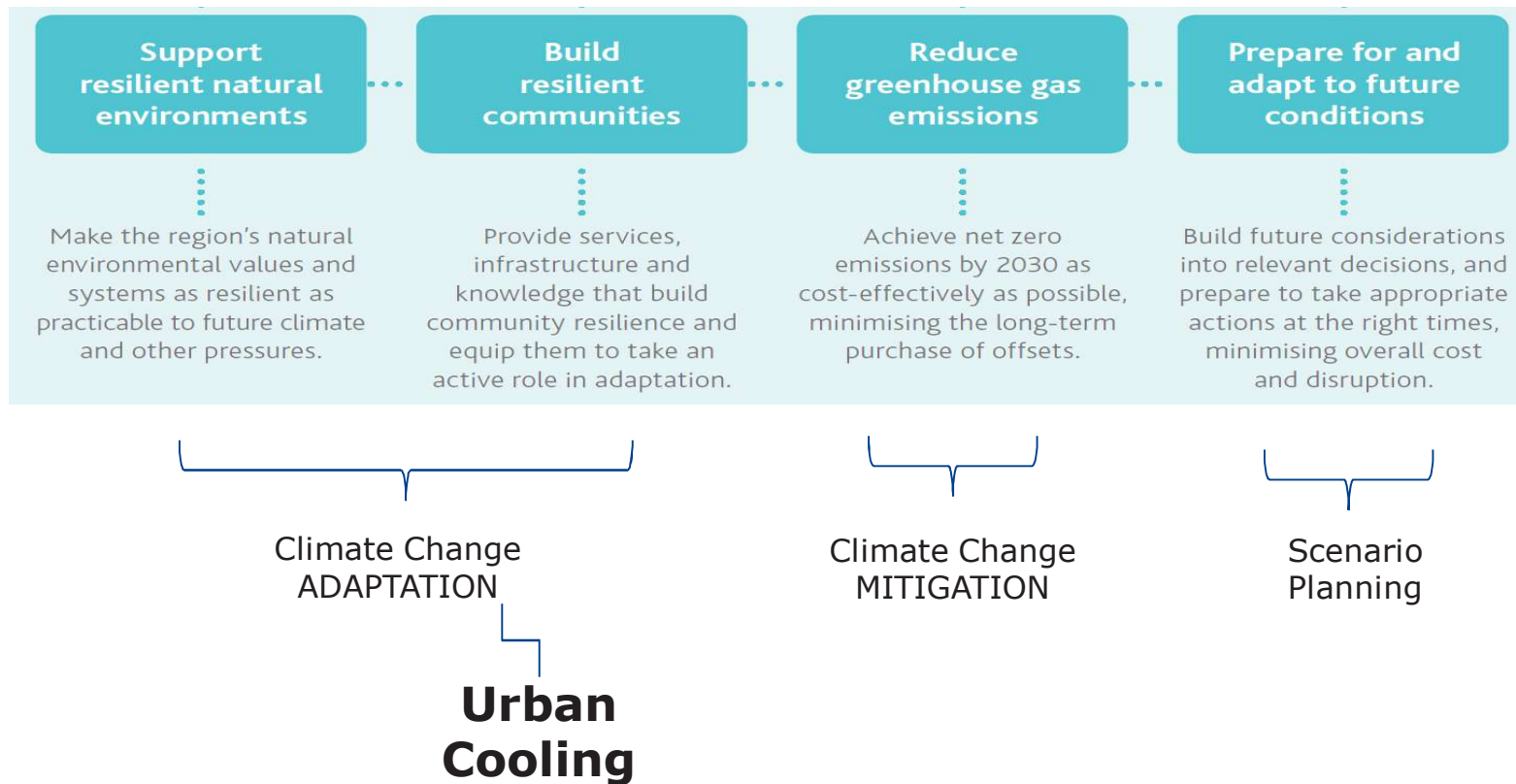
Strategic Framework:

Adapt our services to an increasingly variable climate; Continue to make our region resilient to floods and manage the impacts of climate change and urban development; Partner to deliver a water sensitive city through innovative integrated planning, creating a greener, cooler urban environment; Help to create a sustainable region through innovative resource recovery and reducing our emissions

Environment Scan: climate change identified as highest likelihood/consequence

Climate & Resilience Plan (2017): 10 priority actions

Climate & Resilience Plan (2017)



A Target to Deliver

“Invest directly in improving 30 ha of green spaces for shade and cooling across Melbourne by 2021.”

Waterways and Drainage Investment Plan

Policy Challenges – Evidence Base

Better waterways and drainage for our community

An investment plan

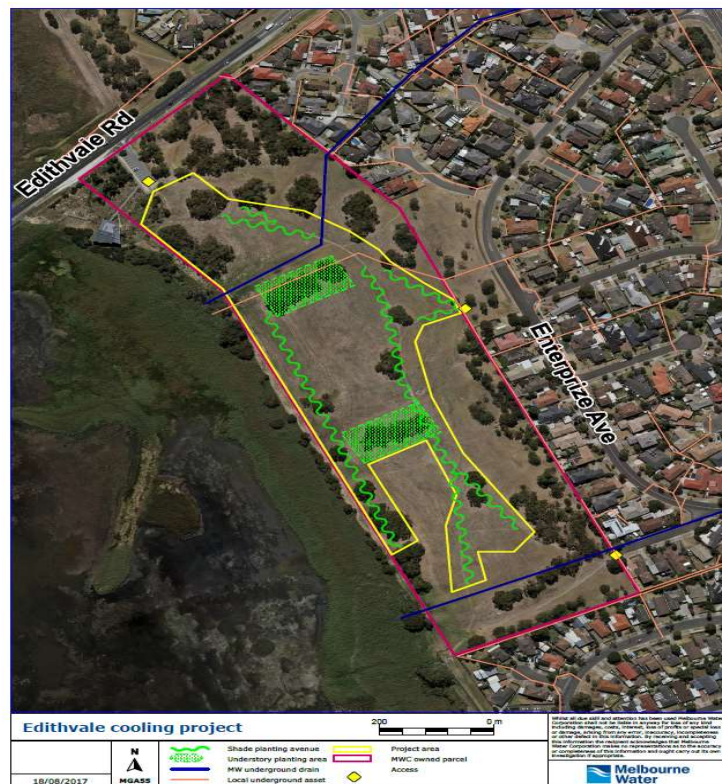


July 2016 – June 2021

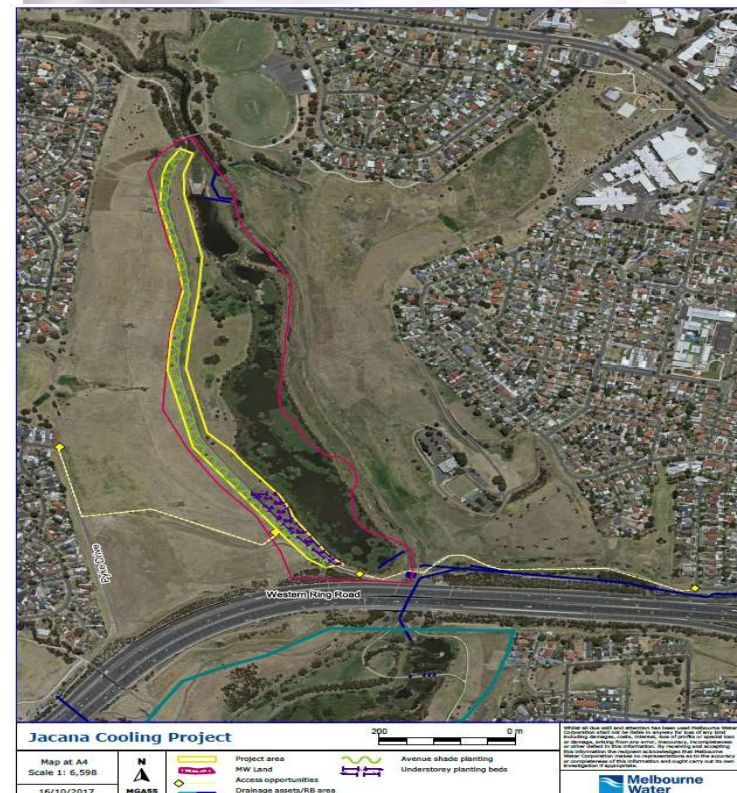


2 Urban Cooling Pilot Sites: 5ha

Edithvale (South-East)



Jacana (West)



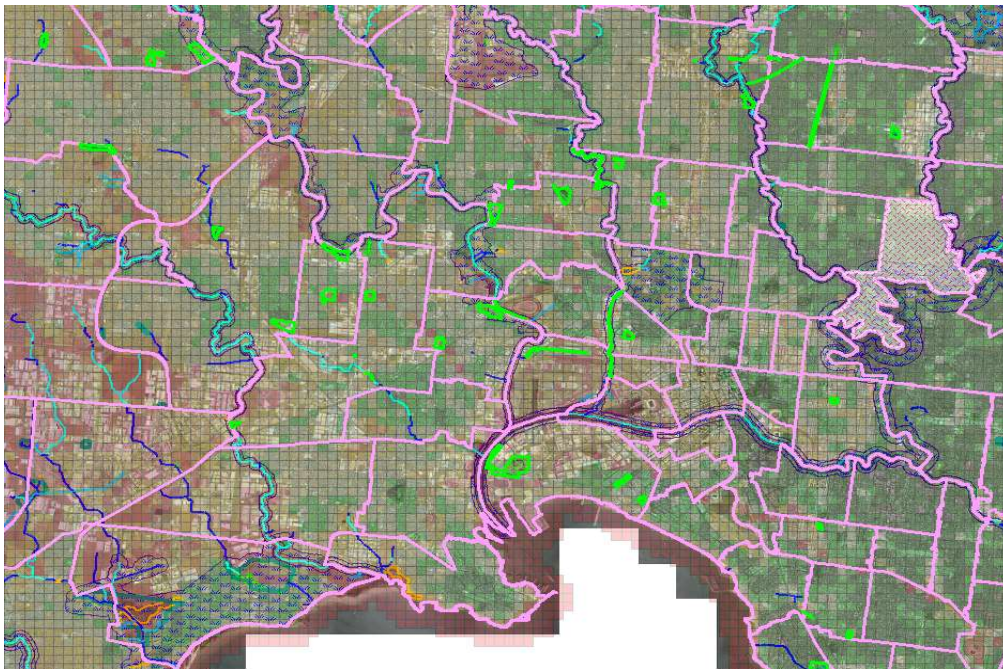
Urban Cooling Beyond Tree Canopy



Greening the Pipeline, Williams Landing

- New parks
- Stormwater from local catchments
- Raingarden treatments
- Irrigation of vegetation
- Canopy trees

Location is everything!



⇒ According to postcode areas in most need of urban cooling

- Canopy cover
- Imperviousness
- Open space area per capita (OS)
- Heat Vulnerability Index (HVI)
- Stormwater drains
- Access to open space
- Scale of benefitting population

⇒ **80 opportunities; 30 on MW land**

Challenges & Opportunities

Challenges:

- Measuring benefits (M&E to inform next pricing submission)
- Key message around WHY we do urban cooling on MW (and beyond!) land
- Creating canopy when trees are inconsistent with Ecological Vegetation Classes (EVCs)
- Urban consolidation and provision of cooling and greening on private property

Opportunities:

- Urban cooling portfolio is tangible; people connect
- Enhanced use of stormwater & IWM
- Citizen science
- Existing grants programs

**Partnership &
collaboration
opportunities**

Working together towards a greener, thriving & cooler region

Carol Jadraque (to April 2018)

carol.jadraque@melbournewater.com.au

Deb Riley (from April 2018)

Matilda Manning & Louise Lovell

(job-share)

