

Urban cooling and greening



URBAN
FOREST
CONSULTING

Urban Cooling Drivers

How Western Sydney is tackling the mysterious 'heat island' effect behind rising temperatures

The Signal By Yasmin Parry

Updated 55 minutes ago



PHOTO: Climate change is one thing, but what if it's your city's design that is causing temperatures to rise? (ABC News: Mary Lloyd)

On a hot summer's day in Sydney, you only need to drive half an hour west before the mercury starts to noticeably jump.

RELATED STORY: [Heatwaves are Australia's deadliest natural hazard and many are unprepared](#)

RELATED STORY: [Sea levels could rise an extra 60cm if emission reductions are delayed until 2035: study](#)

Urban heat

Extreme
weather events

Health and
Wellbeing

Cost
effectiveness

Urban Cooling Responses

Vegetation



Water



Together they are far more effective at mitigating heat





GUIDE TO URBAN COOLING STRATEGIES

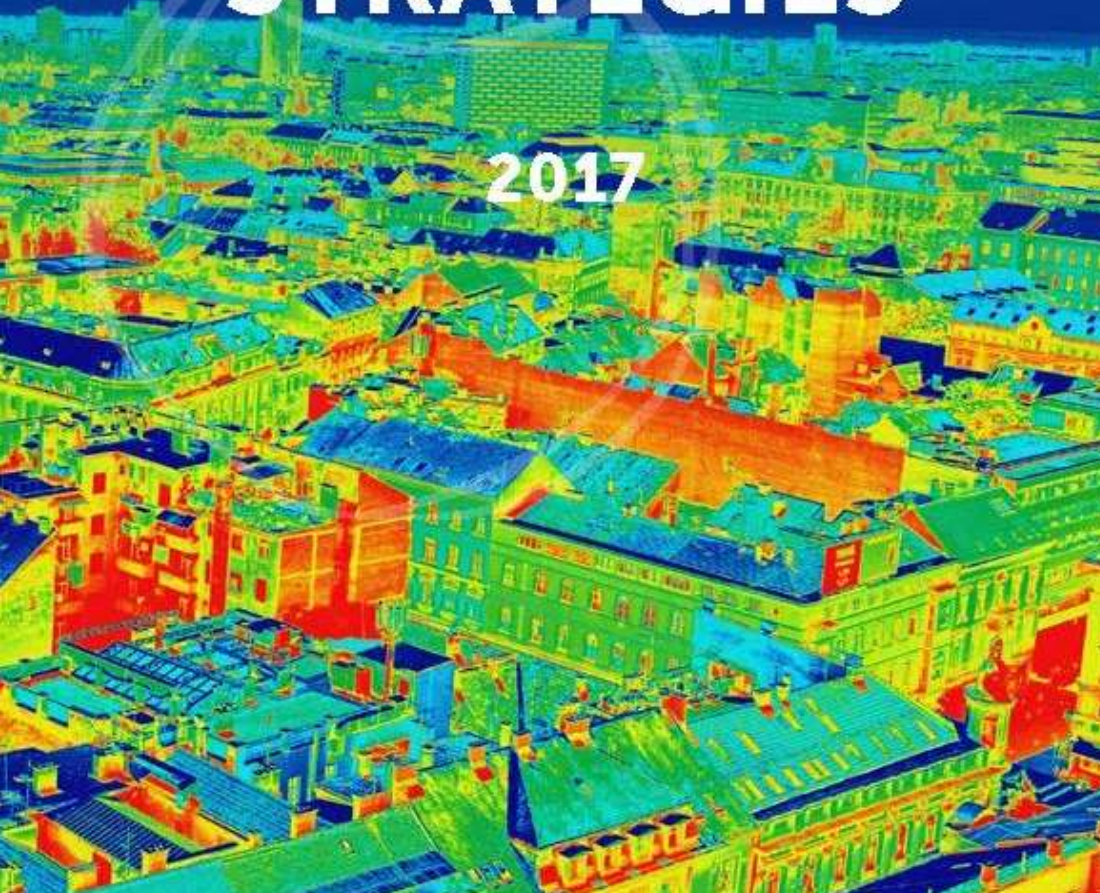
2017



Technical Report

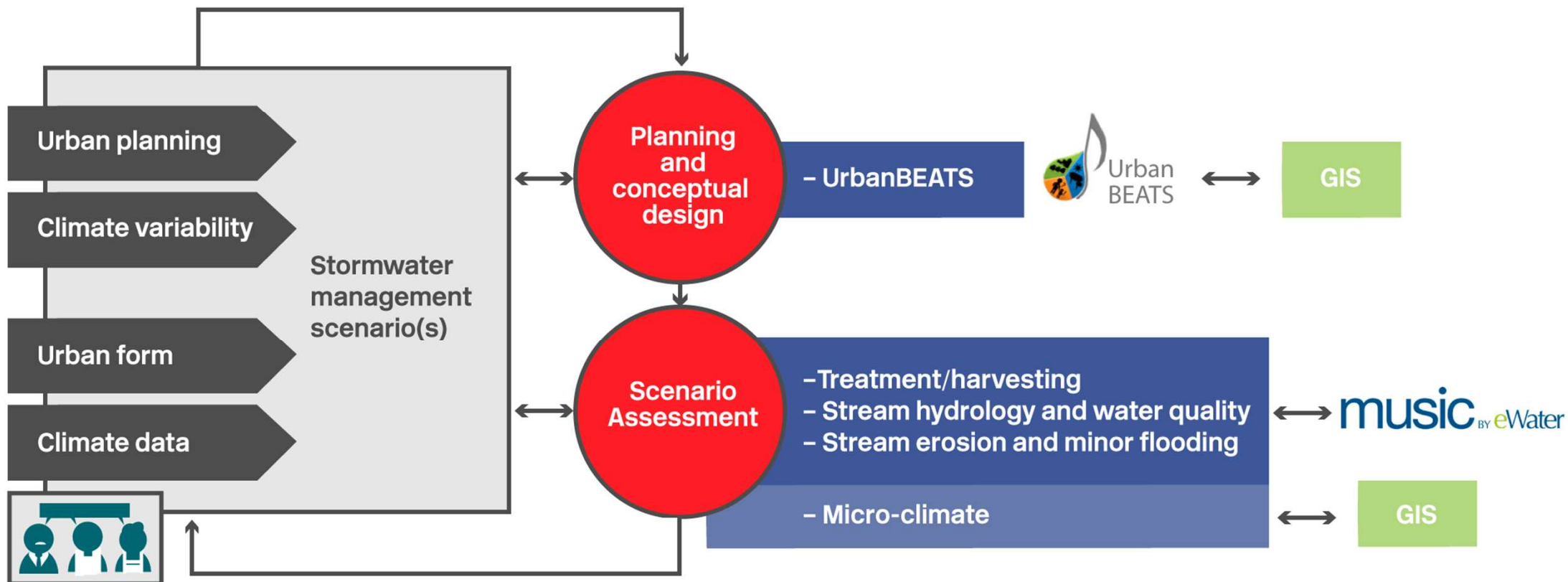
Decision principles for the selection and placement of Green Infrastructure

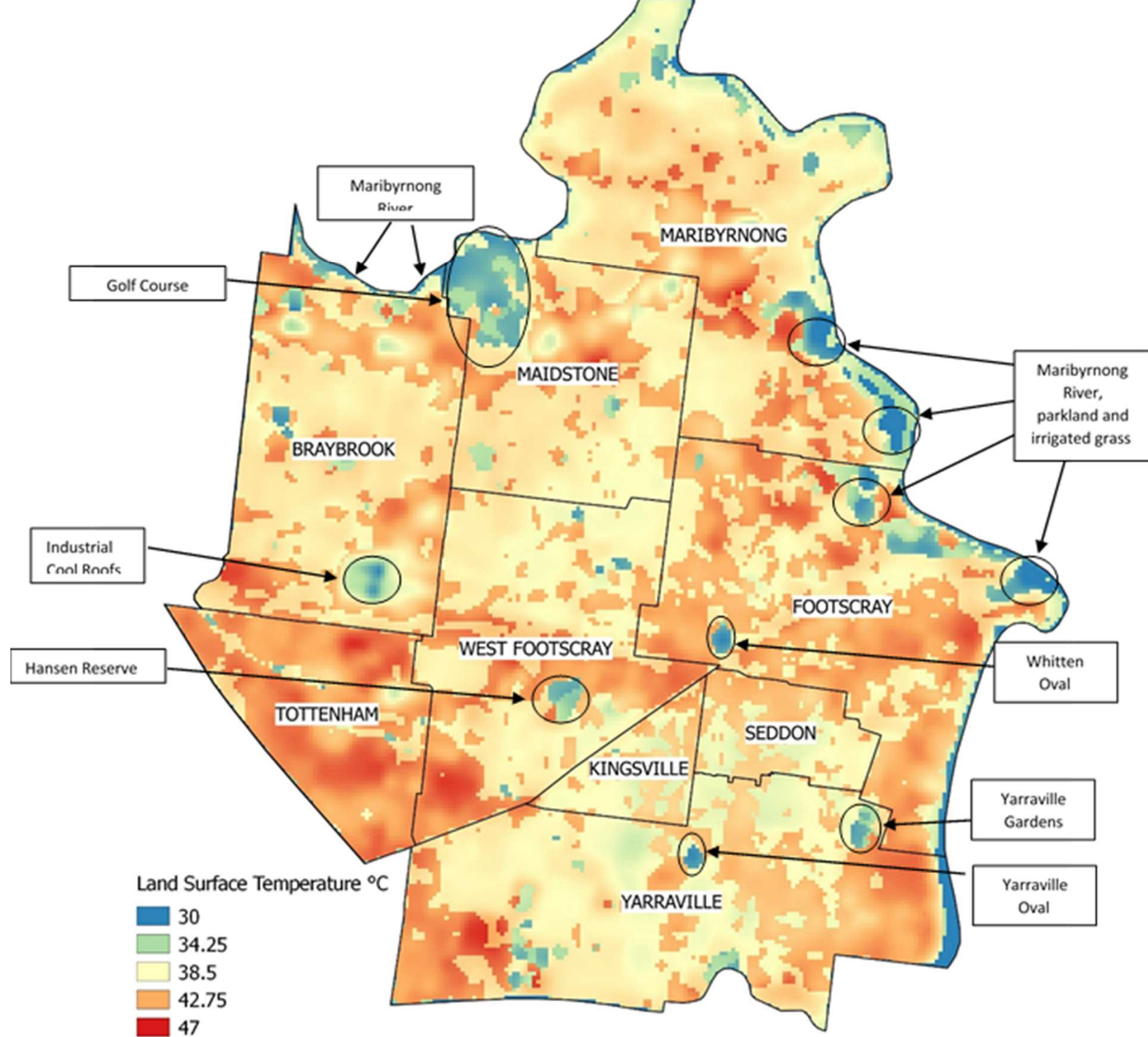
Briony Norton, Andrew Coutts, Stephen Livesley
and Nicholas Williams

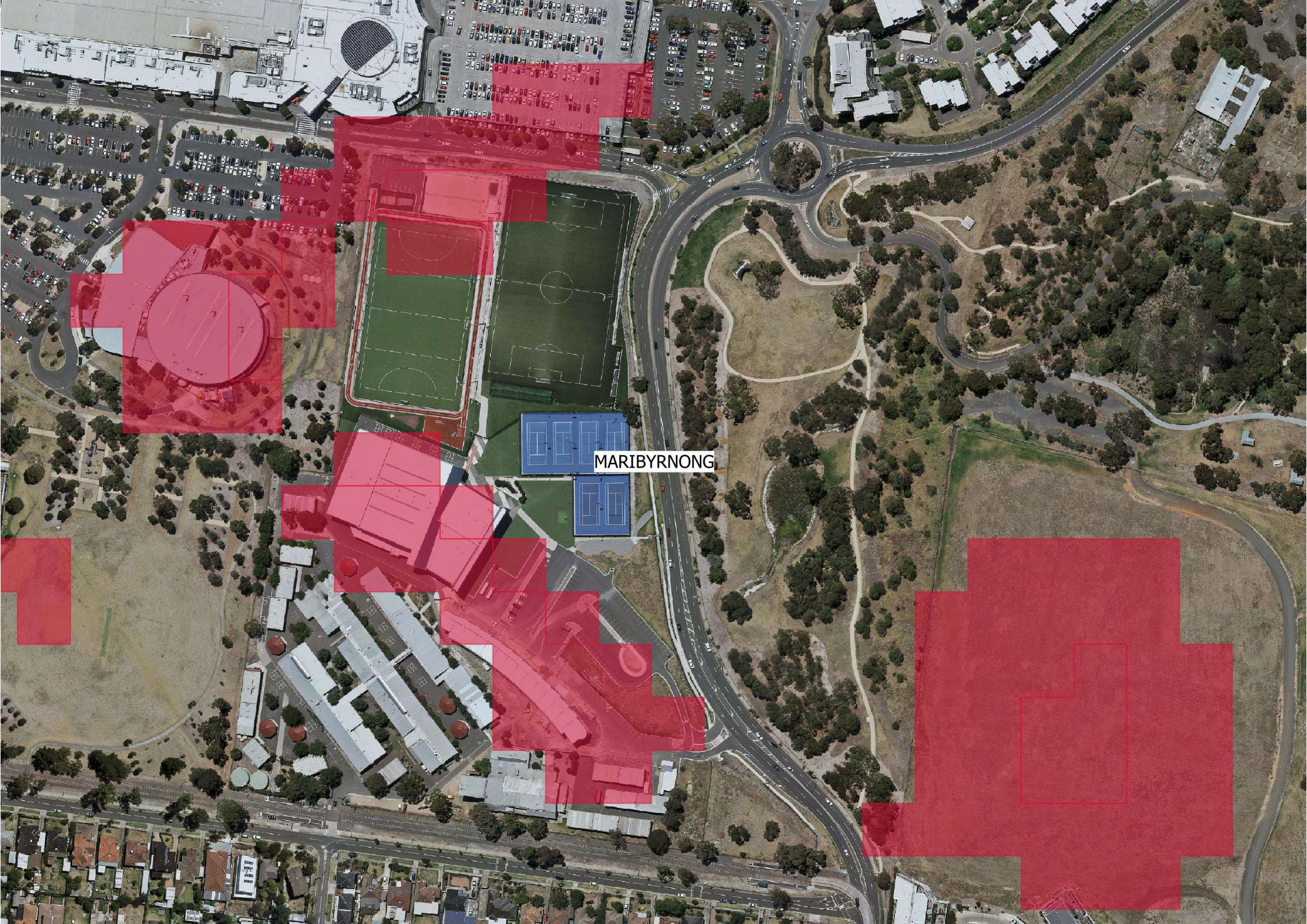




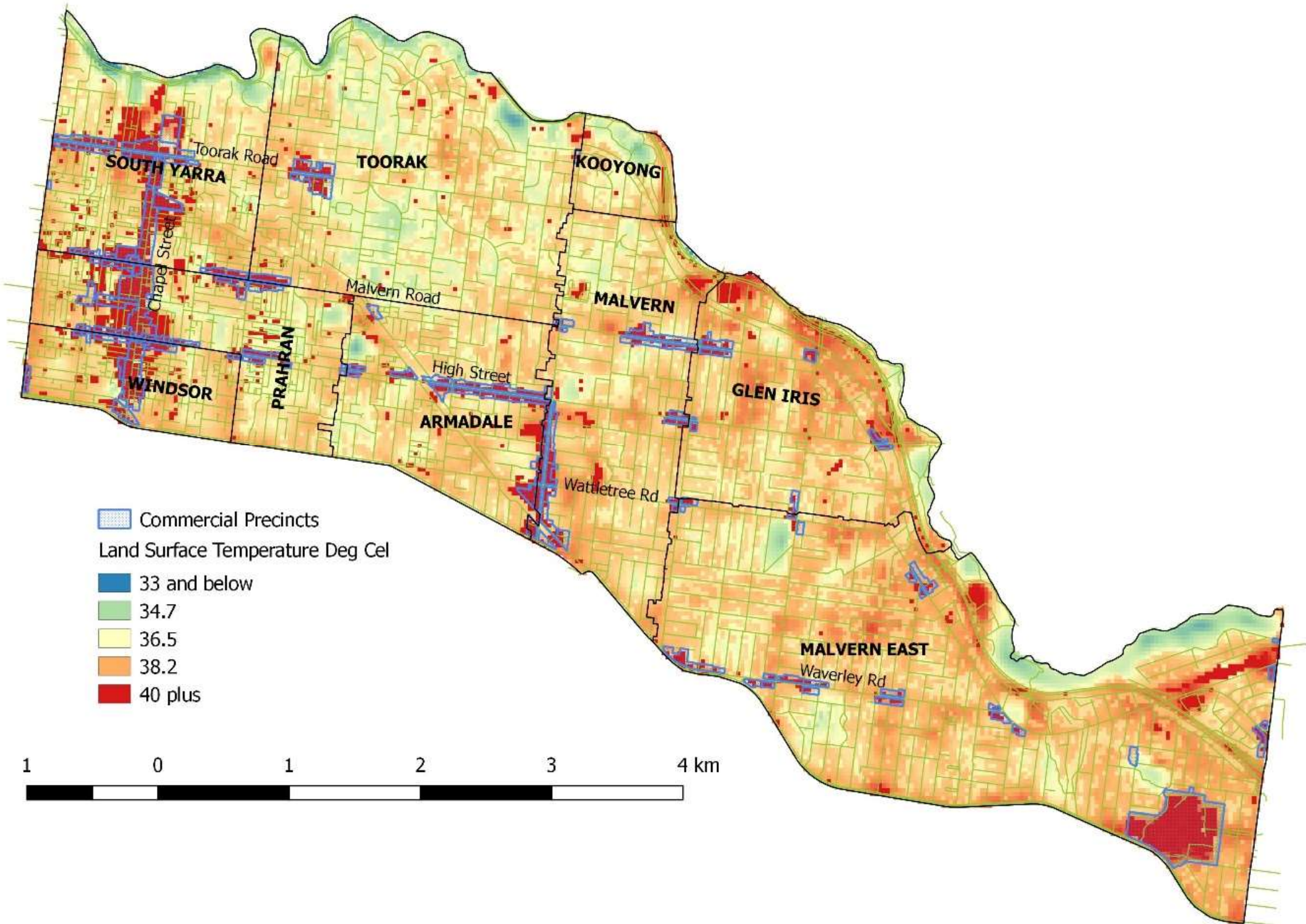
Water Sensitive
Cities Toolkit

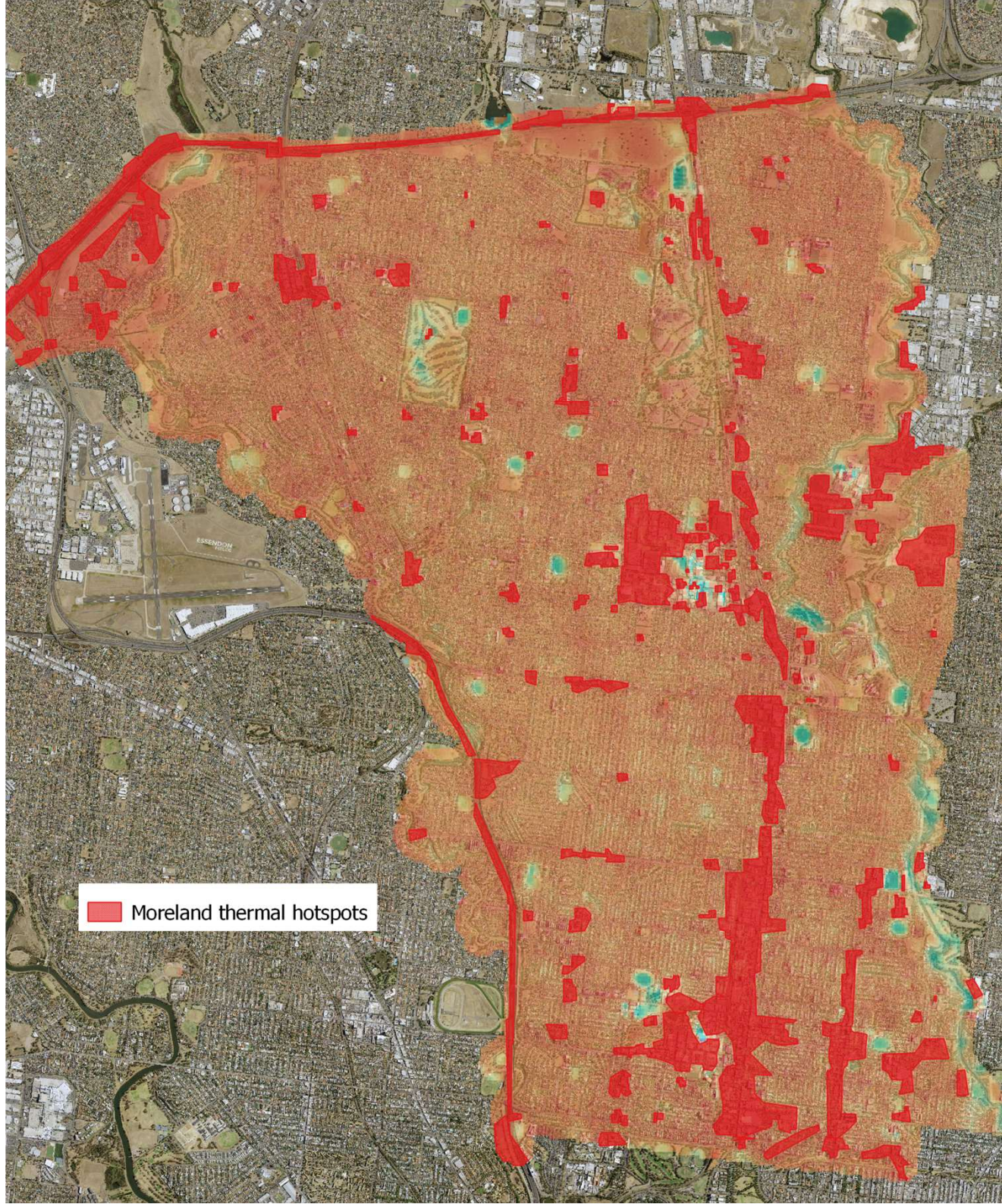


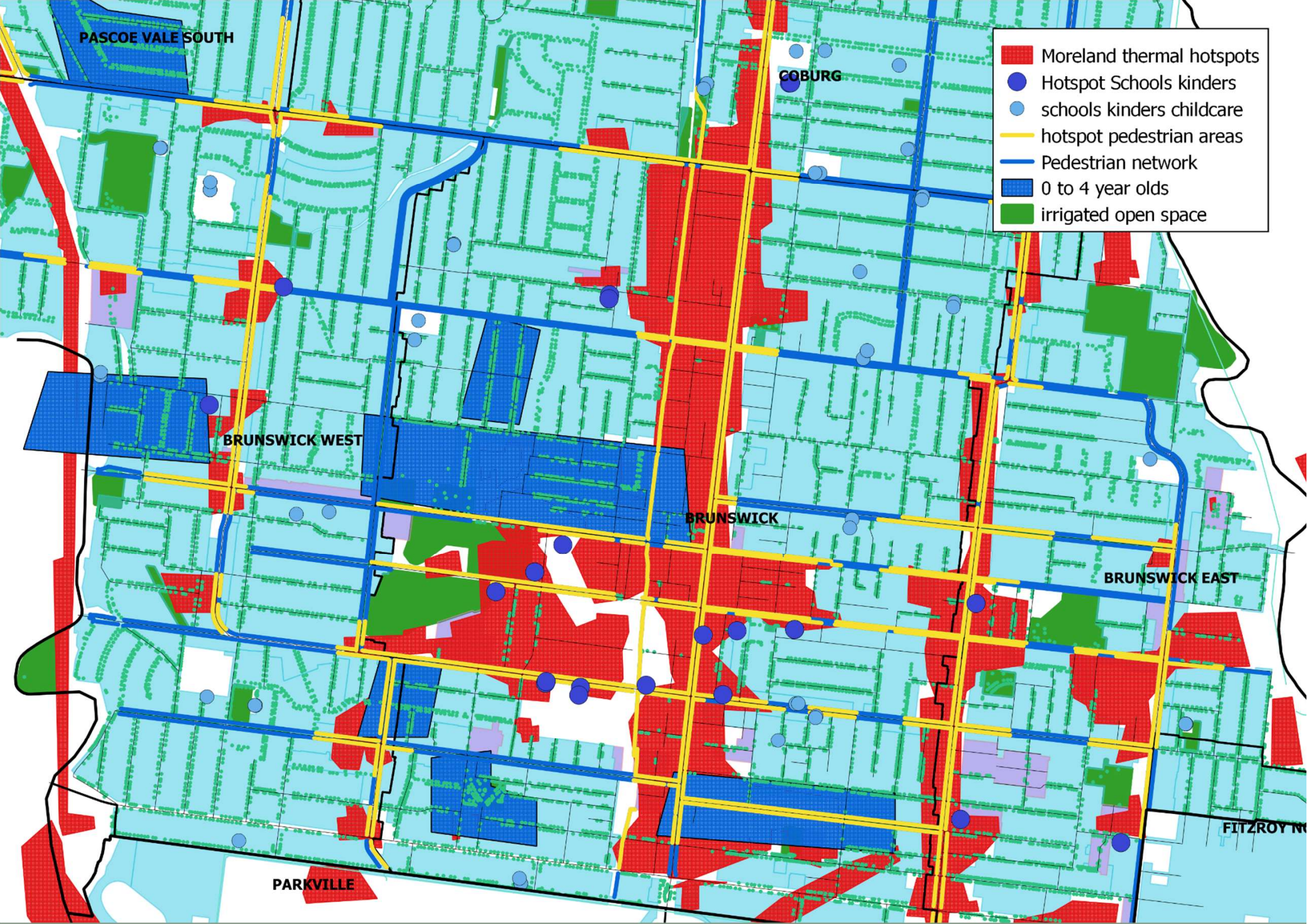


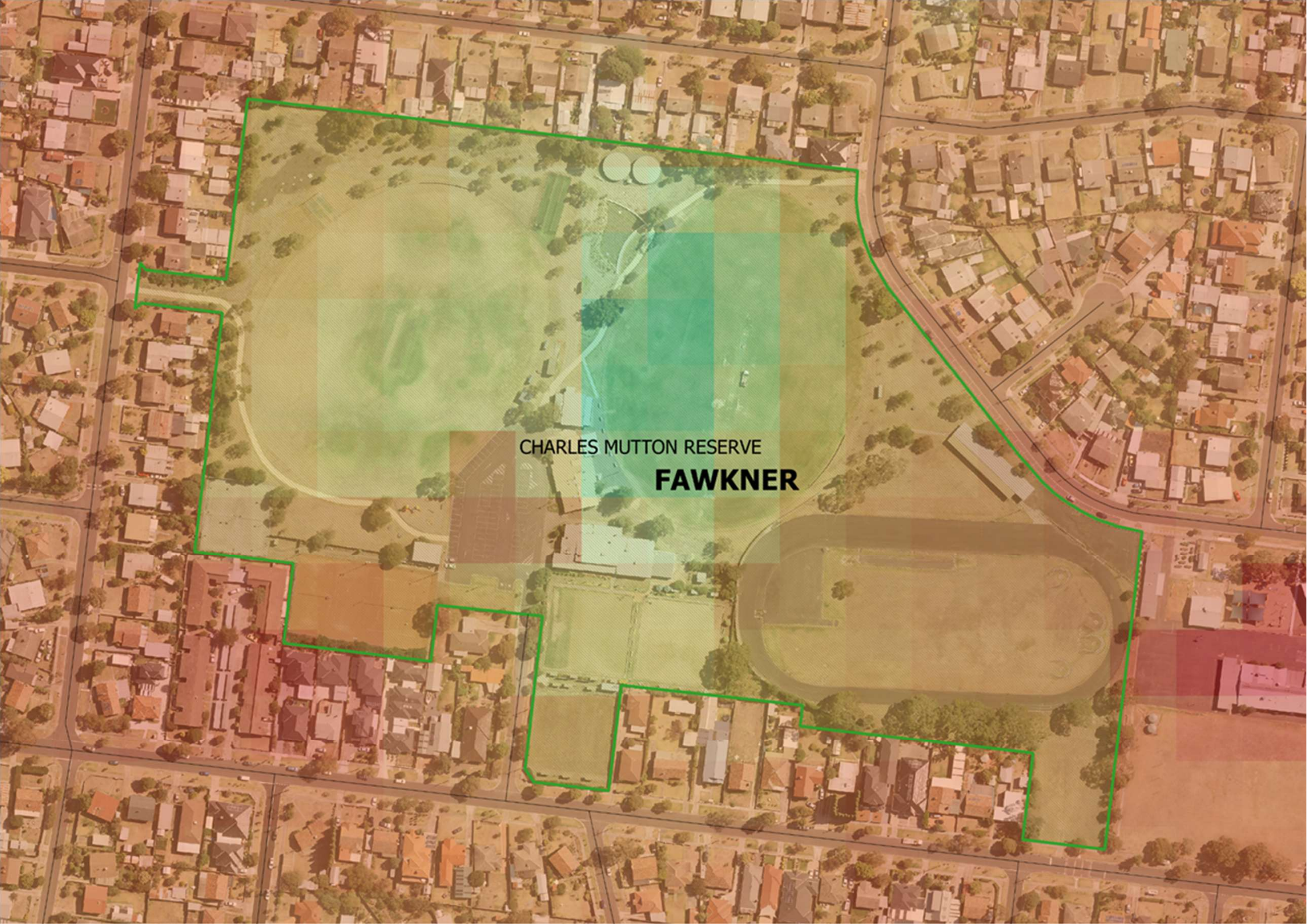


MARIBYRNONG









CHARLES MUTTON RESERVE

FAWKNER