

*water sensitive communities
inevitable or pipe dream?*

STORMWATER VICTORIA 2018 CONFERENCE

Sheraton Melbourne
6 -7 June 2018

understanding context and enabling collaboration

insights from a series of regional capacity building workshops

ROSS ALLEN CONSULTING
strategy · engagement · facilitation



ross@rossallen.consulting · 0467 640 840

WATER SENSITIVE COMMUNITIES

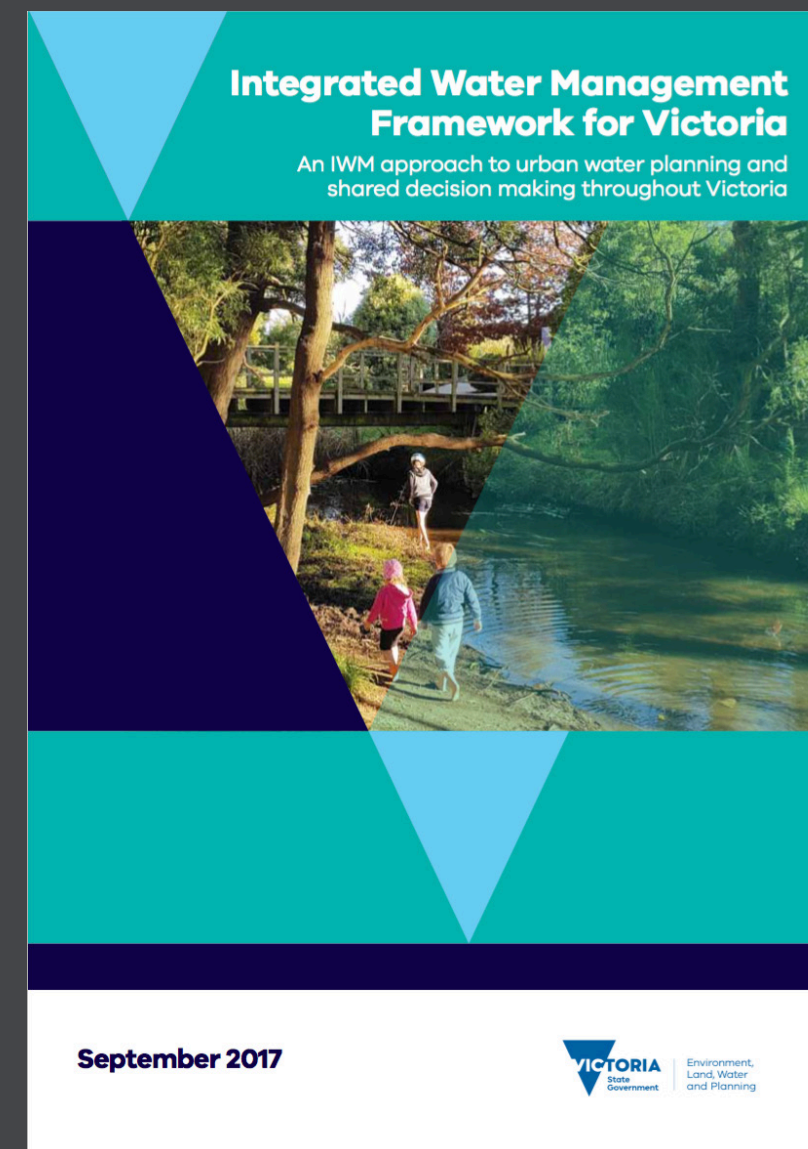
Inevitable OR Pipe Dream?



Ross Allen Consulting acknowledges and pays respect to past, present and future Traditional Custodians and Elders of this nation and the continuation of cultural, spiritual and educational practices of Aboriginal and Torres Strait Islander peoples.

REGIONAL VICTORIA WATER CORPORATIONS





Water Corporations · Local Governments · Catchment Management Authorities

Objective



enhance integrated water management capacity within the Barwon Region

develop a **shared understanding** of how local values and community needs relate to liveable and resilient cities and towns in your region, and the **role of integrated water management**.

© copyright clearwater / www.clearwater.asn.au



Expert perspectives



Rob Skinner



Peter Breen



Chad Foulkes



Esther Kay



Jeremy Cheesman



© copyright clearwater / www.clearwater.asn.au

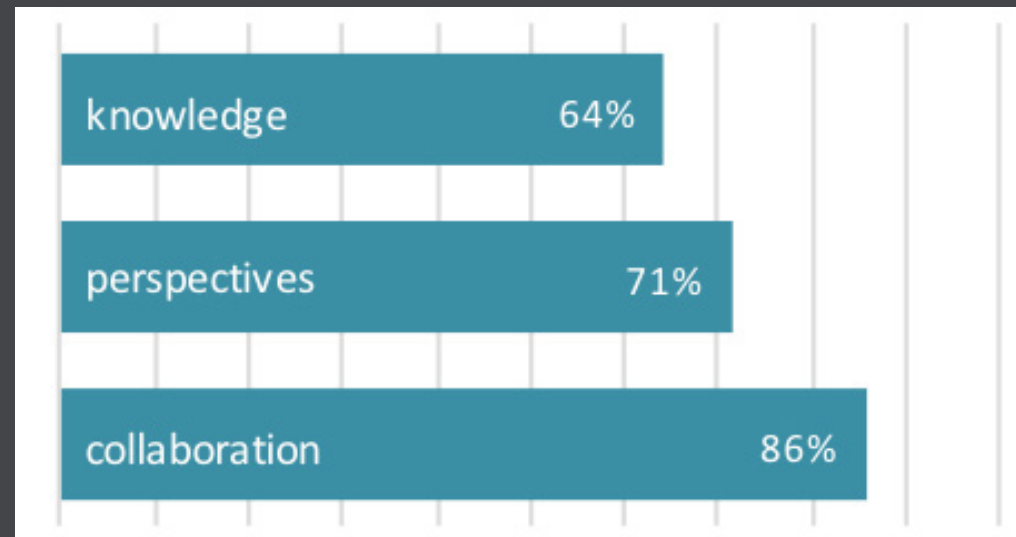


Building regional capacity for collaboration, drawing on:

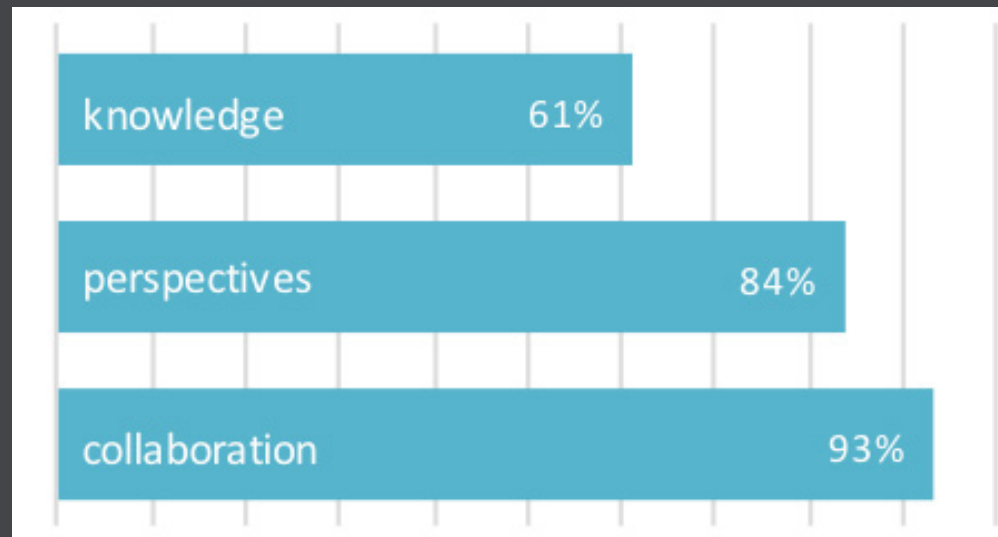
- knowledge and experience of technical experts
- collective wisdom of regional stakeholders

Capacity building outcomes

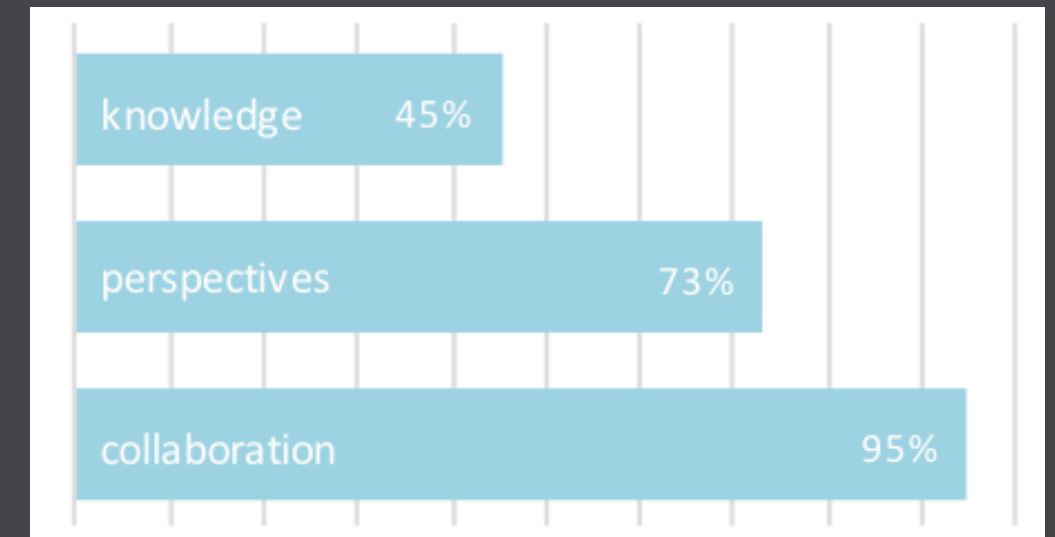
Senior Managers



Middle Managers



Officers



“increased understanding of the different disciplines and perspectives involved in delivering local outcomes related to integrated water management.”

“Increased awareness of the need to seek more opportunities for collaborative and integrated planning.”

Capacity building insights and reflections

- influence of *planning context* on opportunities and processes for supporting water-sensitive communities
- factors *enabling collaboration* on integrated water planning and management

Planning context

LOCATION ▪ urban area / rural area / region

SIZE ▪ city / large town / small town / region

ECONOMY ▪ urban: growing / stable / declining / transforming
rural: growing / stable / declining / transforming

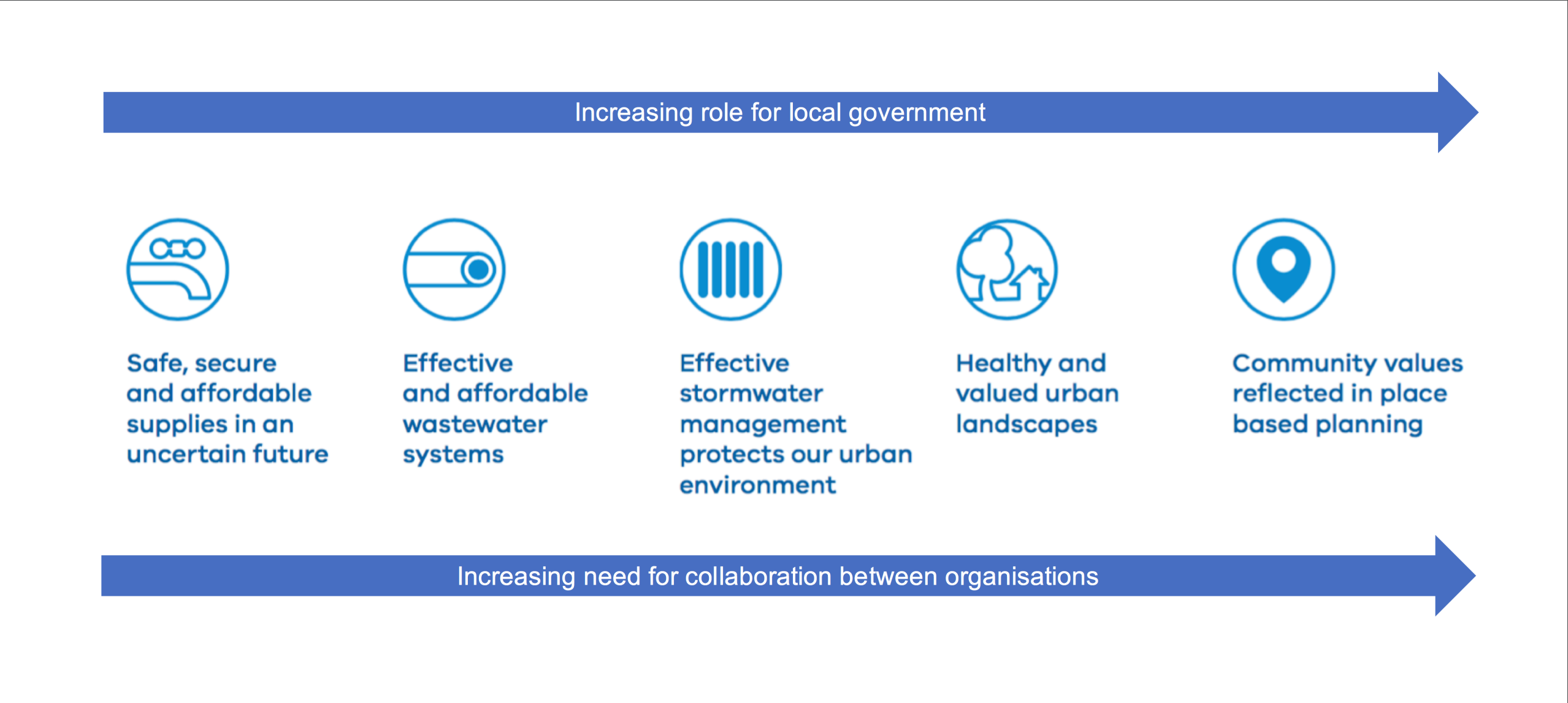
Planning context

OWNERSHIP ■ public land / private land

DEVELOPMENT ■ greenfield development / infill development /
urban densification / agricultural intensification

LOCAL CAPACITY ■ city councils / regional and rural councils
water corporations
catchment management authorities

Planning context



Enabling collaboration

- 1. LEADERSHIP** ▪ executive / champions
- 2. ALIGNMENT** ▪ internal / inter-organisational
- 3. CAPACITY** ▪ knowing and doing
- 4. PLANNING** ▪ understanding framing context (strategic / statutory)
- 5. RESOURCING** ▪ functional / financial

Enabling collaboration



Enabling collaboration



Water-sensitive communities

A shared understanding the role of water in supporting community values and needs provides a strong foundation for collaboration on planning and management of water-services and urban places.

- *planning context* influences the opportunities and processes for supporting water-sensitive communities
- *collaboration* within and between organisations is required to achieve integrated water planning and management to support water-sensitive communities

A wide-angle photograph of a rocky landscape at dusk. In the foreground, several large, light-colored boulders are scattered across a flat, textured rock surface. A small, circular rock pool filled with still water is visible in the lower right foreground. The middle ground shows a dense forest of trees, some with bare branches and others with green foliage. In the background, a vast, flat landscape stretches towards a distant horizon under a sky with soft, colorful clouds from a setting or rising sun. The overall mood is serene and expansive.

Learn. Share. Grow.